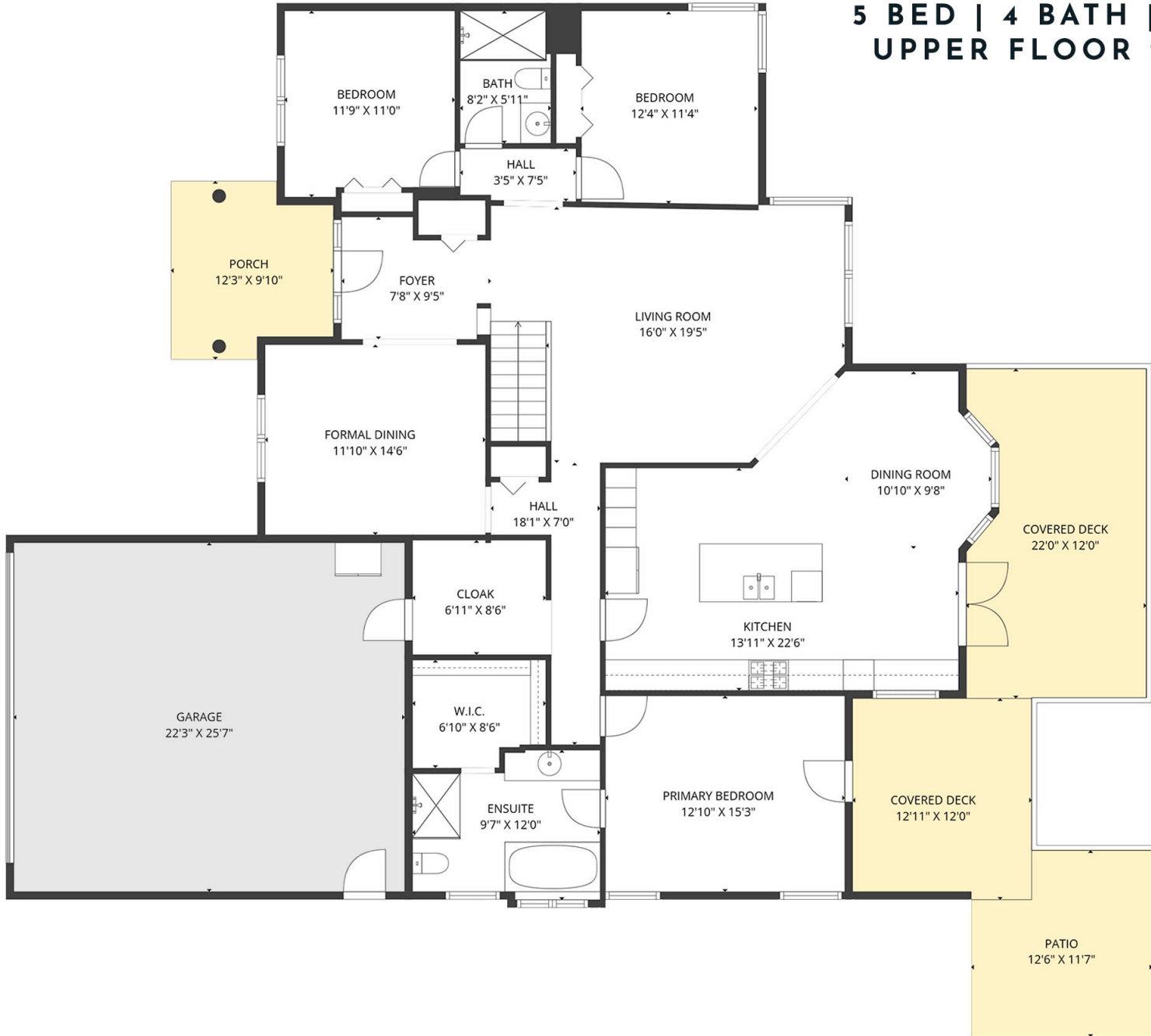


5 BED | 4 BATH | 3889 SQ.FT  
UPPER FLOOR 2027 SQ.FT



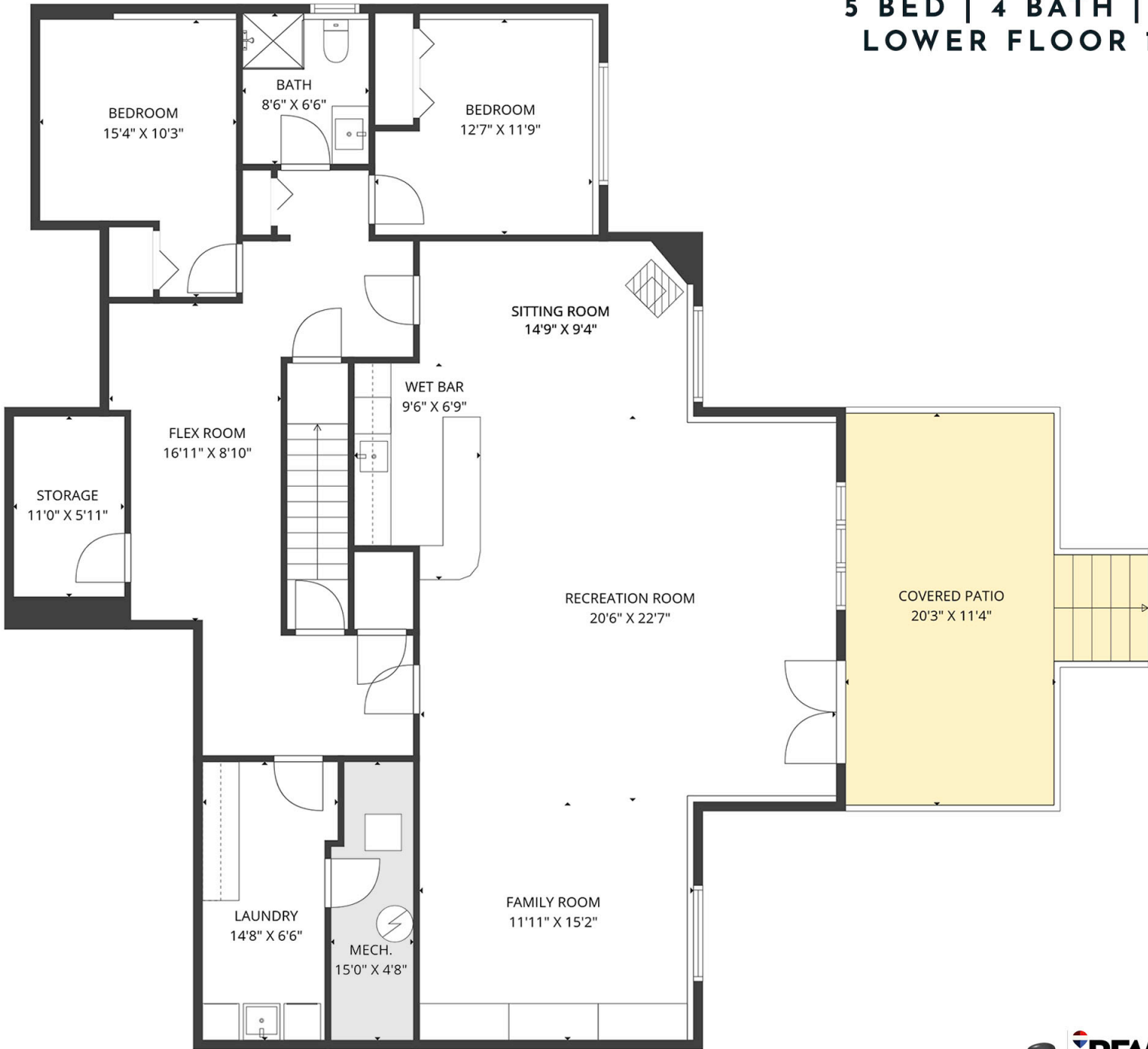
**4837 CANYON RIDGE CRESCENT**

Stone Sisters | [www.StoneSisters.com](http://www.StoneSisters.com) | (250) 862-7675



Tan & grey regions are excluded from the total floor area. All room dimensions and floor areas must be considered approximate and are subject to independent verification. Dimensions are taken from interior laser measurements.

5 BED | 4 BATH | 3889 SQ.FT  
LOWER FLOOR 1862 SQ.FT



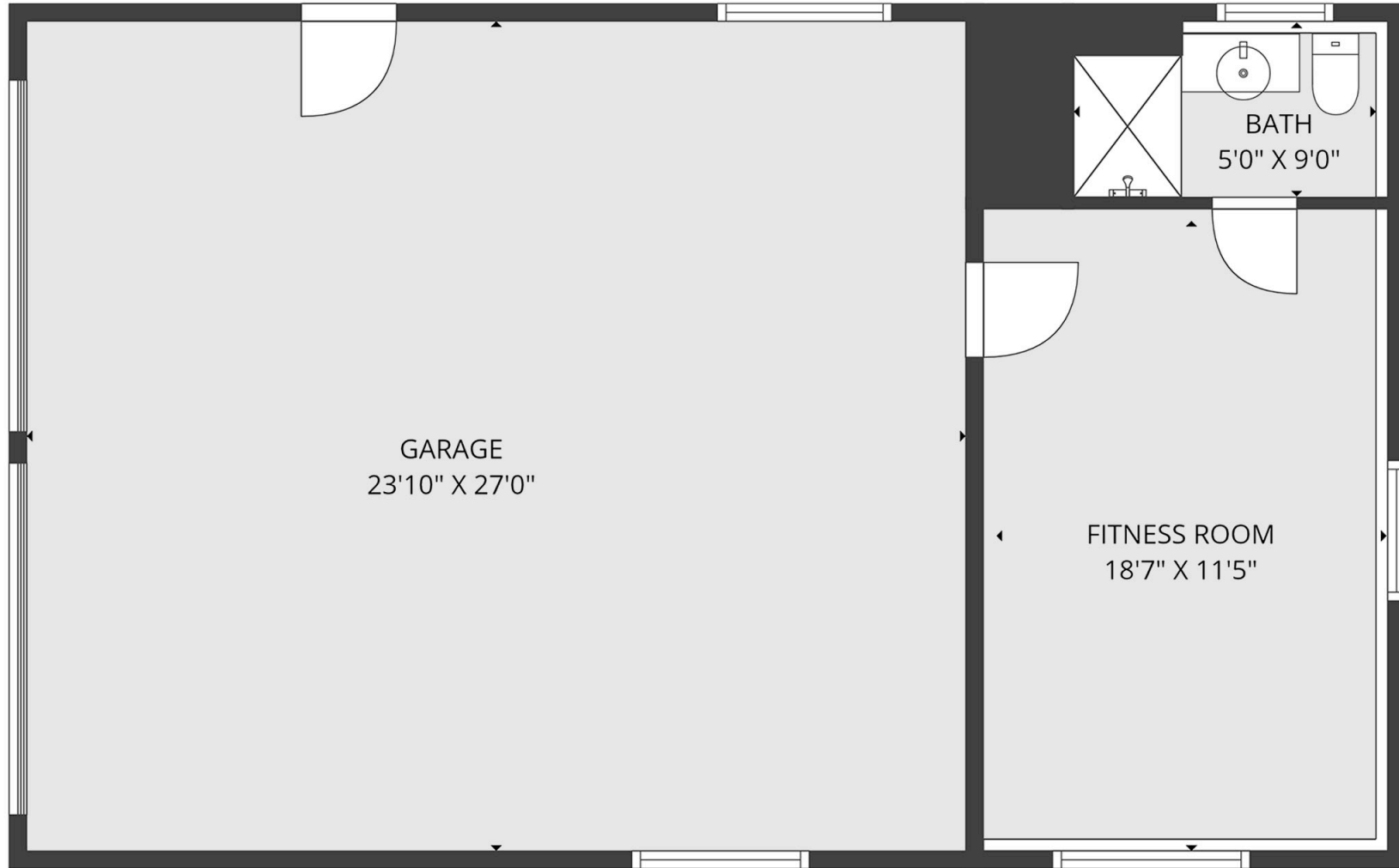
**4837 CANYON RIDGE CRESCENT**

Stone Sisters | [www.StoneSisters.com](http://www.StoneSisters.com) | (250) 862-7675



Tan & grey regions are excluded from the total floor area. All room dimensions and floor areas must be considered approximate and are subject to independent verification. Dimensions are taken from interior laser measurements.

5 BED | 4 BATH | 3889 SQ.FT  
DETACHED GARAGE 1004 SQ.FT



**4837 CANYON RIDGE CRESCENT**

Stone Sisters | [www.StoneSisters.com](http://www.StoneSisters.com) | (250) 862-7675

 **REMAX Kelowna**  
**STONE SISTERS**  
an independent member broker

Tan & grey regions are excluded from the total floor area. All room dimensions and floor areas must be considered approximate and are subject to independent verification. Dimensions are taken from interior laser measurements.