



**REMAX Kelowna**  
**STONE SISTERS**  
an independent member broker

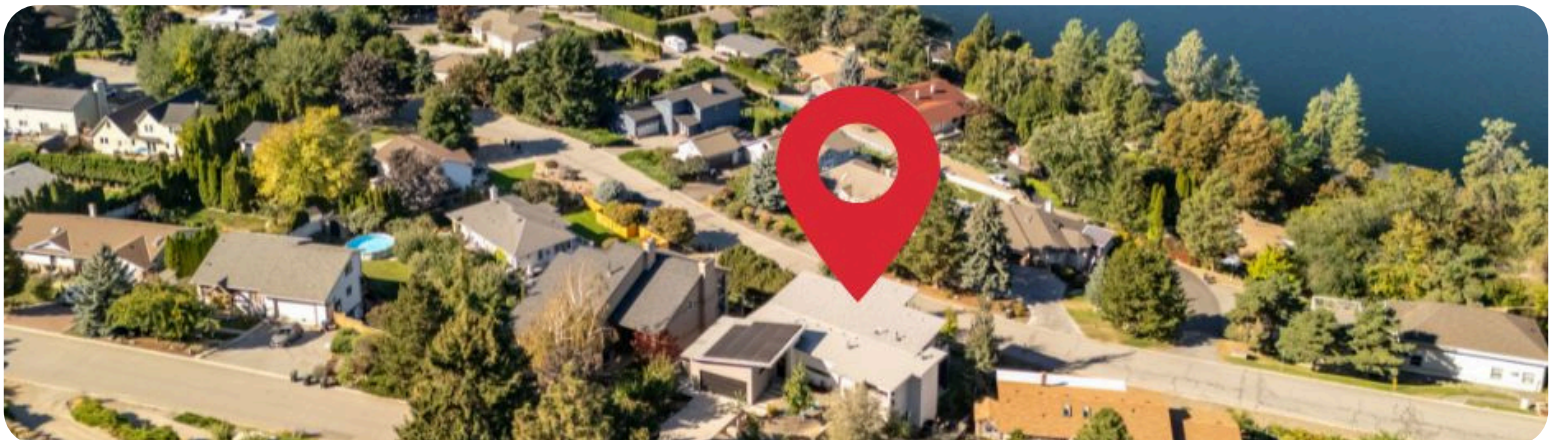


**2155 PALY ROAD**

[WWW.STONESISTERS.COM](http://WWW.STONESISTERS.COM)

Perfectly positioned to capture unobstructed lake and mountain views, this nearly new custom home is a showcase of modern yet timeless design. With soaring ceilings, expansive windows, and seamless indoor-outdoor living via an oversized sliding door to a vaulted covered patio, the main level is both striking and inviting. The lower level impresses with 14-ft ceilings, versatile spaces, and room to adapt for recreation, fitness, or extended living—all while offering unmatched privacy in a coveted location just minutes from schools, shops, recreation, and the lake.

ROOM SIZES – MAIN LEVEL	ROOM SIZES – LOWER LEVEL
Dining room: 11' 6" x 17' 0"	Bedroom: 15' 6" x 18' 2"
Foyer: 19' 6" x 9' 8"	Recreation room: 11' 5" x 25' 4"
Primary bedroom: 13' 3" x 16' 11"	Bedroom: 13' 6" x 16' 11"
Ensuite - Full: 9' 8" x 10' 6"	Ensuite - Full: 9' 0" x 9' 10"
Kitchen: 13' 10" x 15' 8"	Gym: 12' 8" x 16' 5"
Living room: 17' 0" x 19' 6"	Bedroom: 11' 2" x 14' 4"
Laundry: 12' 0" x 10' 8"	Bathroom - full: 11' 2" x 14' 4"
Bedroom: 12' 0" x 15' 8"	
Bedroom - Half: 9' 2" x 4' 11"	







## PROPERTY FEATURES

- Panoramic lake & mountain views
- Open-concept main level with soaring ceilings
- 8x12 ft sliding door to vaulted covered patio
- Lower level: 14-ft ceilings, rec room, office, gym, kitchenette rough-in
- 31 solar panels for ultimate energy efficiency
- Two-car garage w/ EV charger & lift potential
- Pool ready landscaped yard with fruit trees
- Private, mature neighbourhood
- Minutes to schools, shops & lake

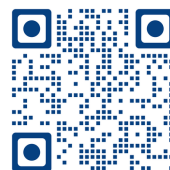
Year Built: 2016

3,668 Square Feet

Parking: Double Attached Garage

Lot size: 0.23 Acres

Taxes: \$ 6,239.51



**CONTACT US FOR MORE INFORMATION:**  
 250.862.7675 | [info@stonesisters.com](mailto:info@stonesisters.com) | [stonesisters.com](http://stonesisters.com)