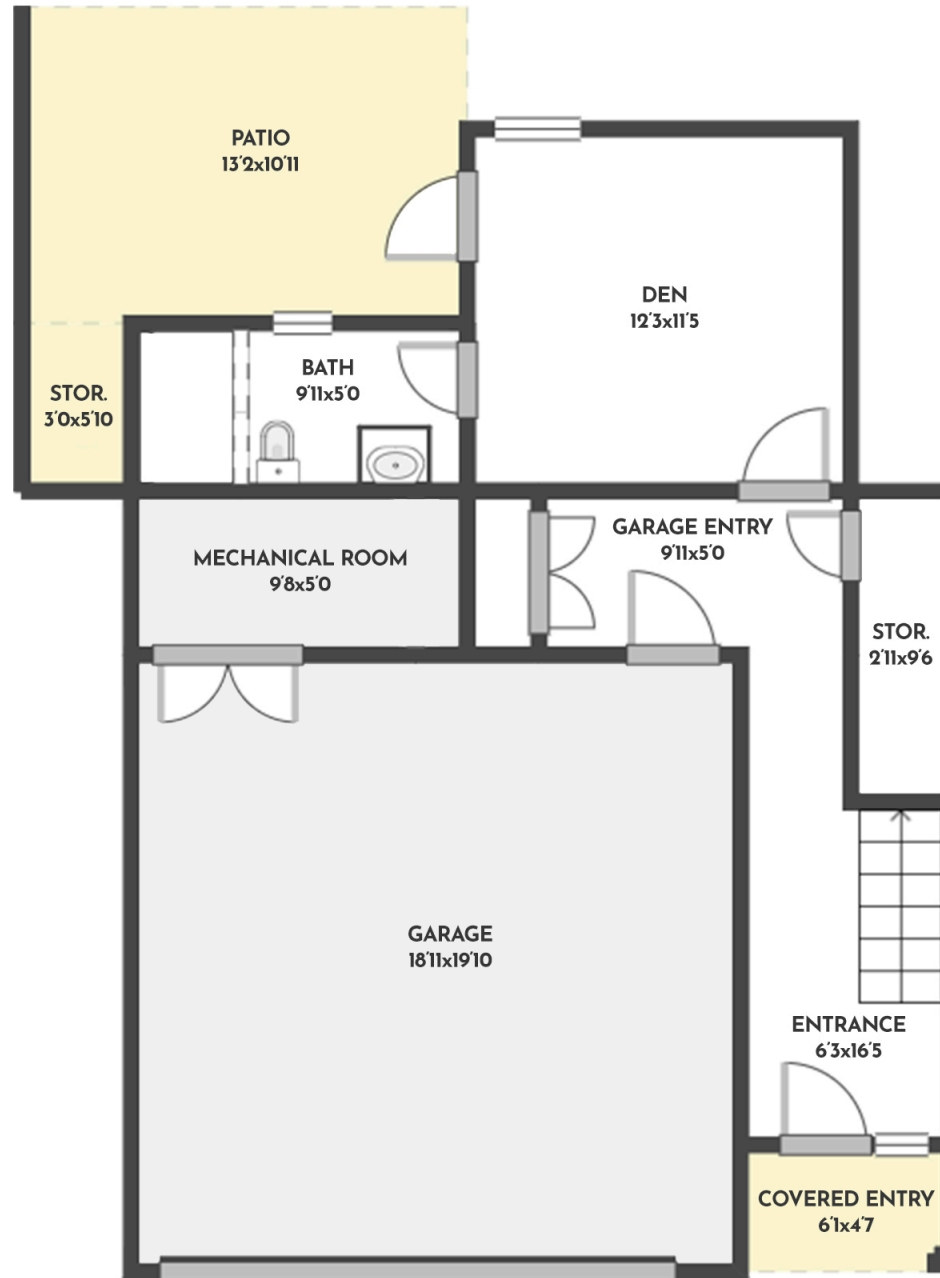


**3 BED + DEN | 2 BATH + 2 HALF BATH | 2088 SQ.FT**  
**GROUND FLOOR 420 SQ.FT**



**#17 - 3719 WOODSDALE ROAD**

Stone Sisters | [www.StoneSisters.com](http://www.StoneSisters.com) | (250) 862-7675



Tan & grey regions are excluded from the total floor area. All room dimensions and floor areas must be considered approximate and are subject to independent verification. Dimensions are taken from interior laser measurements.

**3 BED + DEN | 2 BATH + 2 HALF BATH | 2088 SQ.FT**  
**FIRST FLOOR 771 SQ.FT**



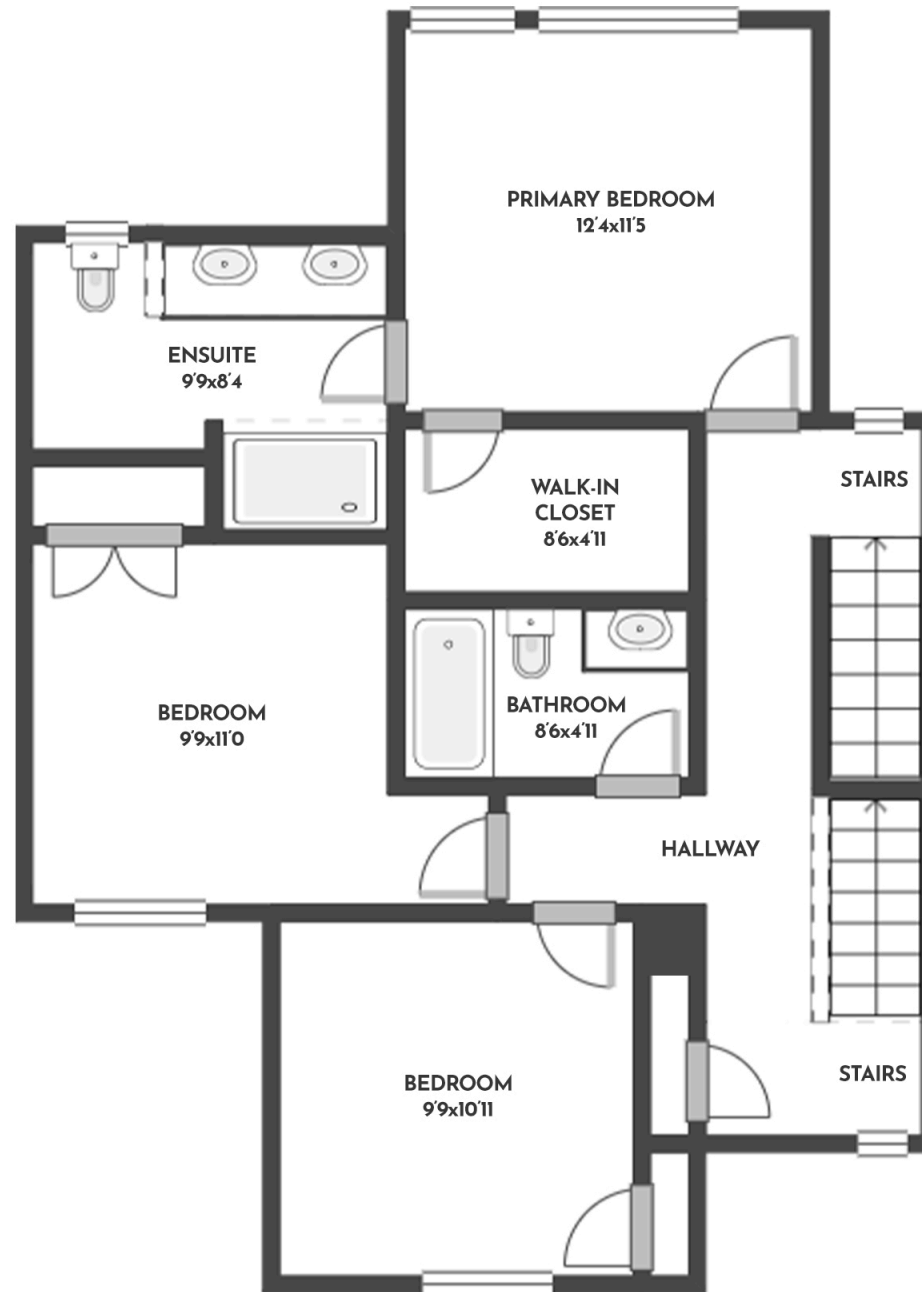
**#17 - 3719 WOODSDALE ROAD**

Stone Sisters | [www.StoneSisters.com](http://www.StoneSisters.com) | (250) 862-7675



Tan & grey regions are excluded from the total floor area. All room dimensions and floor areas must be considered approximate and are subject to independent verification. Dimensions are taken from interior laser measurements.

**3 BED + DEN | 2 BATH + 2 HALF BATH | 2088 SQ.FT**  
**SECOND FLOOR 801 SQ.FT**



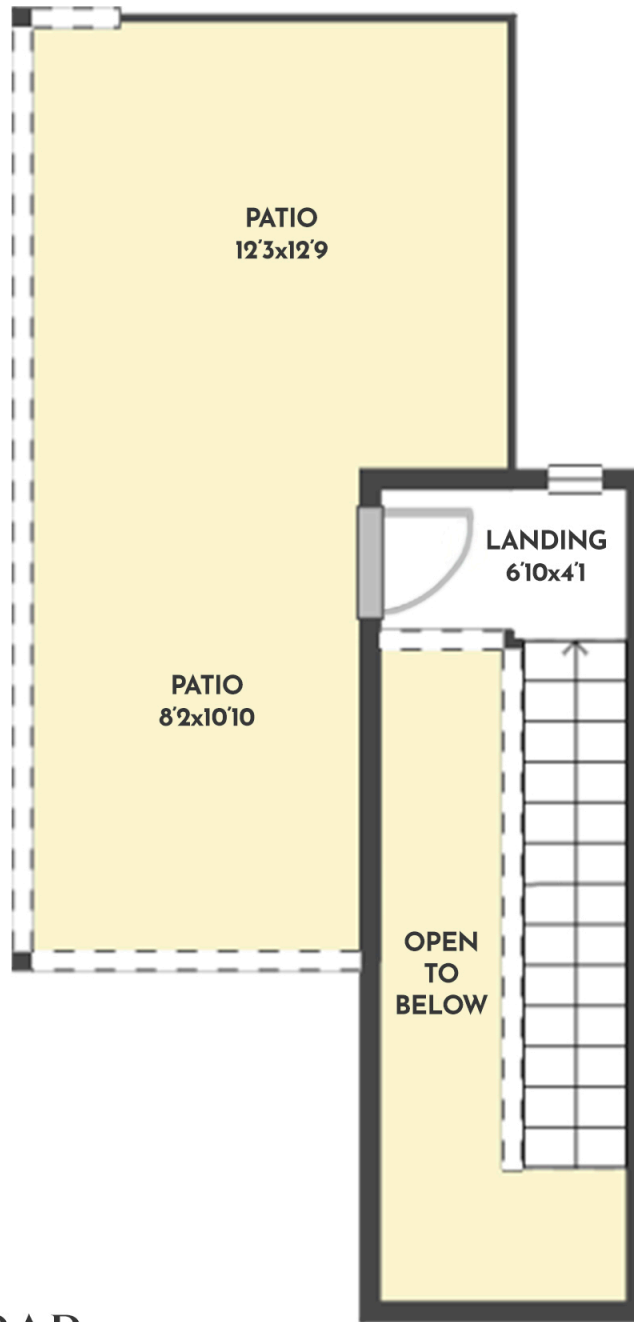
**#17 - 3719 WOODSDALE ROAD**

Stone Sisters | [www.StoneSisters.com](http://www.StoneSisters.com) | (250) 862-7675



Tan & grey regions are excluded from the total floor area. All room dimensions and floor areas must be considered approximate and are subject to independent verification. Dimensions are taken from interior laser measurements.

**3 BED + DEN | 2 BATH + 2 HALF BATH | 2088 SQ.FT**  
**ROOFTOP PATIO 96 SQ.FT**



**#17 - 3719 WOODSDALE ROAD**

Stone Sisters | [www.StoneSisters.com](http://www.StoneSisters.com) | (250) 862-7675



Tan & grey regions are excluded from the total floor area. All room dimensions and floor areas must be considered approximate and are subject to independent verification. Dimensions are taken from interior laser measurements.