



5 1750 WESTSIDE ROAD NORTH

WWW.STONESISTERS.COM

DETAILS

ADDRESS	1750 Westside Road N Unit# 5	BEDROOMS	4
		BATHROOMS	5
		FINISHED AREA	6,395 SQ. FT.

SPECIFICATIONS & FEATURES

LOT SIZE	10.5 acres	YEAR BUILT	1999
WATER	Private Utility, Well	POOL	Gorgeous pool oasis
SEWER	Septic tank	AMENITIES NEARBY	Park
VIEWS	Lake view, Mountain view	HEATING	Heat Pump
TAXES	\$8,418.91	COOLING	Heat Pump
STRATA FEE	\$ 271	FIREPLACE	Wood burning
		GARAGE/DRIVEWAY	Triple garage +Ample room for boat and RV

ROOM SIZES – MAIN LEVEL	ROOM SIZES – SECOND LEVEL	ROOM SIZES – LOWER LEVEL
Full ensuite bathroom: 13'6" x 9'7"	Library: 15'8" x 13'10"	Full bathroom : 11'9" x 10'10"
Partial bathroom: 5'0" x 9'6"	Full bathroom: 8'9" x 4'11"	Bedroom : 12'0" x 13'10"
Entry: 10'8" x 14'10"	Media room: 21'11" x 23'0"	Bedroom : 17'0" x 12'11"
Primary Bedroom: 17'0" x 15'0"	Full ensuite bathroom: 11'10" x 13'2"	Wet bar : 7'0" x 14'9"
Wet Bar: 9'9" x 11'5"	Lounge: 11'10" x 9'11"	Family room : 18'5" x 23'0"
Dining room: 15'5" x 21'5"	Primary Bedroom : 18'5" x 19'2"	Exercise room : 18'0" x 21'8"
Living room: 30'2" x 22'2"		Gym : 17'5" x 18'11"
Kitchen: 13'6" x 21'5"		



Welcome to a rare and remarkable lakeview estate where luxury, lifestyle, and nature converge on 10.5 pristine acres. Designed for those who value privacy, serenity, and the beauty of elevated rural living, this bespoke residence offers an inspired retreat just 20 minutes from downtown Kelowna. Floor-to-ceiling windows frame panoramic lake views from every level, creating a seamless connection between refined interiors and the stunning natural landscape. With resort-style amenities, a versatile layout, and curated outdoor spaces, this property invites you to live expansively—without compromise.















**4 BED | 4.5 BATH | 6395 SQ.FT
MAIN FLOOR 2470 SQ.FT**

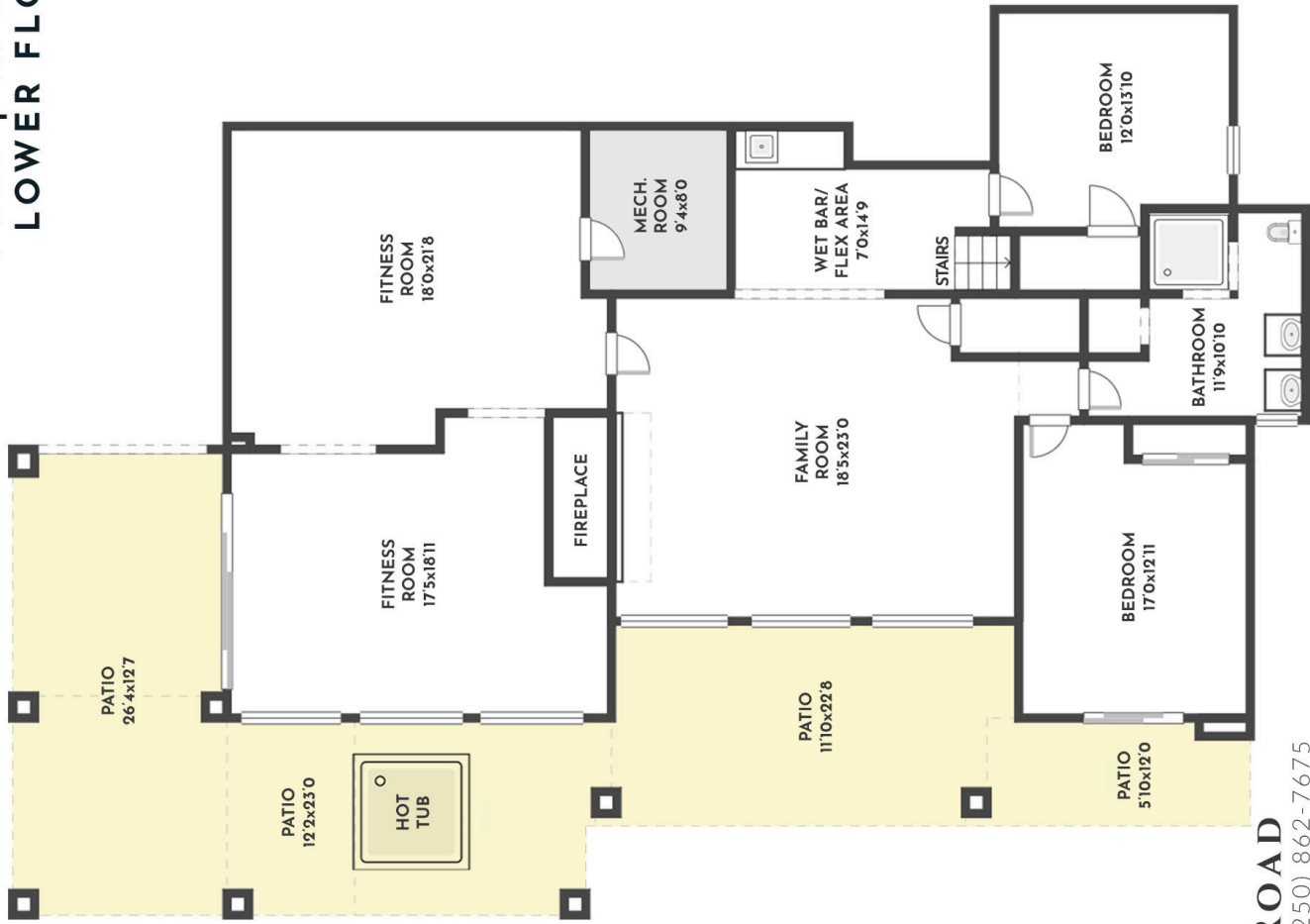


5-1750 WESTSIDE ROAD

Stone Sisters | www.StoneSisters.com | (250) 862-7675

Tan & grey regions are excluded from the total floor area. All room dimensions and floor areas must be considered approximate and are subject to independent verification. Dimensions are taken from interior laser measurements.

**4 BED | 4.5 BATH | 6395 SQ.FT
LOWER FLOOR 2050 SQ.FT**



5-1750 WESTSIDE ROAD

Stone Sisters | www.StoneSisters.com | (250) 862-7675

Tan & grey regions are excluded from the total floor area. All room dimensions and floor areas must be considered approximate and are subject to independent verification. Dimensions are taken from interior laser measurements.

**4 BED | 4.5 BATH | 6395 SQ.FT
UPPER FLOOR 1875 SQ.FT**



5-1750 WESTSIDE ROAD

Stone Sisters | www.StoneSisters.com | (250) 862-7675

Tan & grey regions are excluded from the total floor area. All room dimensions and floor areas must be considered approximate and are subject to independent verification. Dimensions are taken from interior laser measurements.

Grand Architectural Design with a Contemporary Edge

- Over 6,300 sq. ft. of expertly customized living space across three light-filled levels
- Striking floor-to-ceiling windows showcase the lake and bring in brilliant natural light throughout
- Timeless lines and finishes, modern updates, and an intuitive layout for both family living and grand-scale entertaining

Chef's Kitchen, Perfected

- A fully redesigned culinary dream space featuring top-tier appliances, sleek two tone cabinetry, custom backsplash and sophisticated finishings
- Large central island with ample seating connects seamlessly to dining, living, and beverage bar
- Perfect for quiet mornings or hosting vibrant gatherings with family and friends

Flexible & Functional Layout

- Two luxurious primary suites (one on the main and one on the upper level)—ideal for multigenerational living or guest flexibility
- Lofted library and versatile upper bonus space with inspiring lake views
- Lower level with expansive rec room, full wet bar, 2 bedrooms, home gym, steam room, and ample storage

Outdoor Oasis Tailored for Leisure & Lifestyle

- Stunning inground pool & hot tub area with lake views and total privacy
- Professionally landscaped grounds with irrigation, underground sprinklers, and mature plantings
- Established vineyards, orchards, and garden beds offer the ideal start for a hobby farm or sustainable living

An Entertainer's Dream

- Multiple balconies and outdoor terraces for alfresco dining or sunset viewing
- Seamless indoor-outdoor connection throughout the home
- Grand open concept floor plan ideal for entertaining

Your Private Retreat with Room to Grow

- Set back on a quiet rural stretch of Westside Road with direct hiking trail access
- Private well water, septic system, and strata-managed shared infrastructure
- Gated entry ensures security and peace of mind, with ample parking for 12+ vehicles including RVs, trailers, and guests

A LEGACY ESTATE OF VISION AND TRANQUILITY

Whether you're cultivating a vineyard, lounging poolside, or hiking directly from your backyard, this exceptional property is as functional as it is breathtaking. The thoughtful blend of timeless architecture, modern comfort, and hobby farm potential creates a sanctuary perfectly suited for both everyday luxury and weekend escape. With multiple entertaining areas, dual primary suites, established gardens, and lake views that never fade, this is more than a home—it's a lifestyle rooted in beauty, purpose, and possibility.



RE/MAX Kelowna



CONTACT US FOR MORE INFORMATION:

250.862.7675

INFO@STONESISTERS.COM

STONESISTERS.COM