



172 SKYLAND DRIVE

WWW.STONESISTERS.COM

DETAILS

ADDRESS	172 Skyland Drive	BEDROOMS	4
		BATHROOMS	4
		FINISHED AREA	4,018 SQ. FT.

SPECIFICATIONS & FEATURES

LOT SIZE	0.64 acres (66x247)	YEAR BUILT	2014
WATER	Municipal water	YEAR RENOVATED:	2023
SEWER	Municipal sewage system	HEATING	Forced Air & heated flooring
VIEWS	Lake, Mountain and Valley	COOLING	Central air conditioning
TAXES	\$10,522.30 – 2025	FIREPLACE	Gas
ROOF:	Asphalt/Shingle	GARAGE/DRIVEWAY	Triple Attached Garage

ROOM SIZES – MAIN LEVEL	ROOM SIZES – SECOND LEVEL	ROOM SIZES – LOWER LEVEL
Office: 13'0" x 14'2"	Bedroom: 15'7" x 11'6"	Wine Cellar: 10'6" x 16'3"
Laundry room: 7'3" x 9'4"	Bedroom: 13'10" x 13'11"	Bedroom: 13'11" x 10'4"
Pantry: 8'10" x 9'4"	Primary Bedroom: 14'0" x 15'4"	Recreation room: 27'0" x 18'8"
Kitchen: 19'4" x 15'3"		Family room: 13'11" x 16'8"
Dining room: 10'8" x 15'3"		
Living room: 14'3" x 16'8"		



Welcome to a masterfully updated residence in the heart of Wilden—one of Kelowna’s most prestigious and naturally stunning communities. Thoughtfully renovated from the ground up in 2023, this home blends architectural sophistication with everyday comfort, all set against the backdrop of panoramic lake and mountain views. From the moment you arrive, the modern exterior and impeccable attention to detail set a tone of timeless elegance. With curated finishes, soaring ceilings, and seamless indoor-outdoor living, this home is an inspired retreat designed for both connection and quiet luxury.







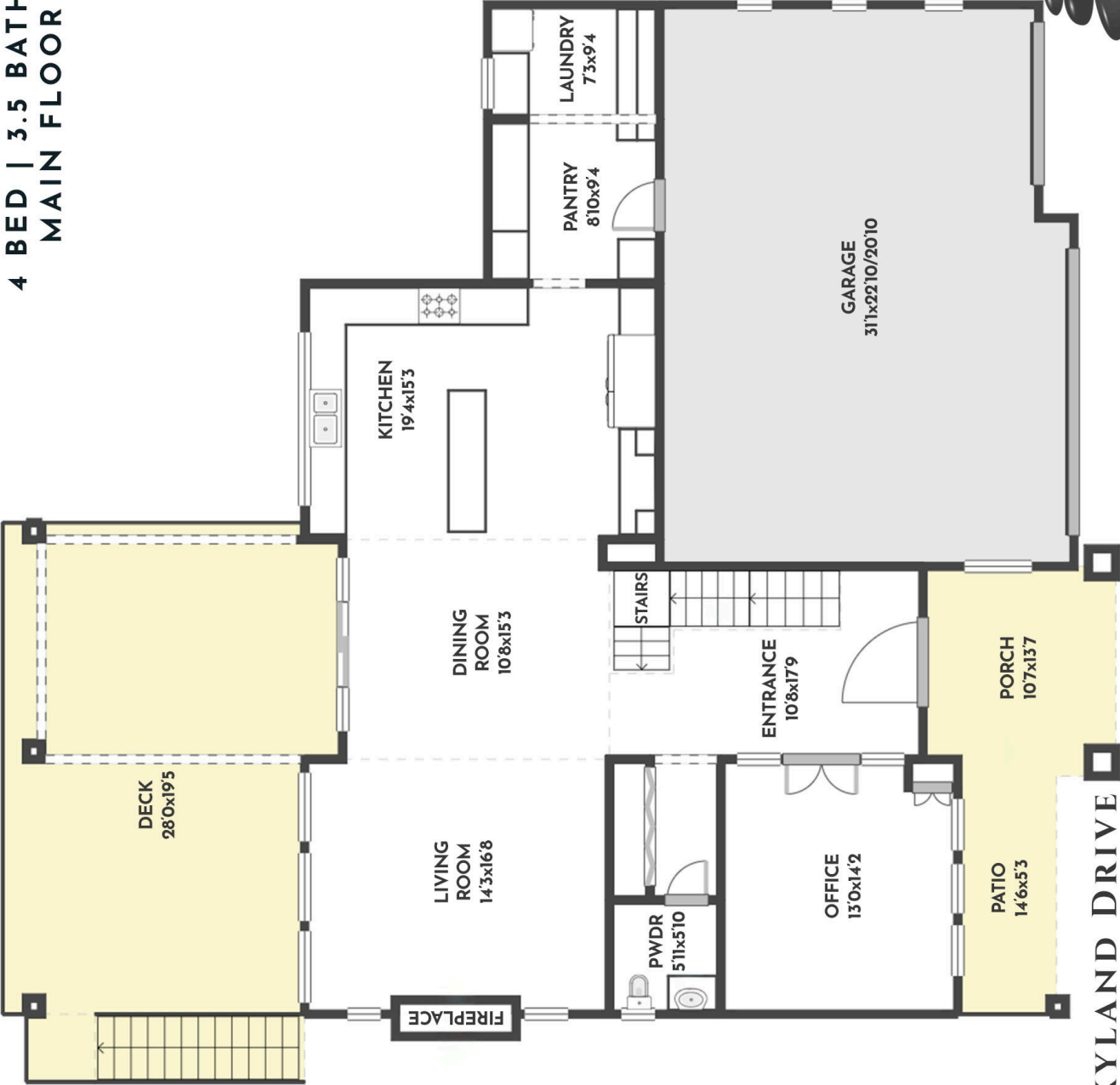








**4 BED | 3.5 BATH | 4018 SQ.FT
MAIN FLOOR 1456 SQ.FT**



RE/MAX Kelowna
STONE SISTERS

172 SKYLAND DRIVE

Stone Sisters | www.StoneSisters.com | (250) 862-7675

Tan & grey regions are excluded from the total floor area. All room dimensions and floor areas must be considered approximate and are subject to independent verification. Dimensions are taken from interior laser measurements.

**4 BED | 3.5 BATH | 4018 SQ.FT
UPPER FLOOR 1216 SQ.FT**



172 SKYLAND DRIVE

Stone Sisters | www.StoneSisters.com | (250) 862-7675

Tan & grey regions are excluded from the total floor area. All room dimensions and floor areas must be considered approximate and are subject to independent verification. Dimensions are taken from interior laser measurements.

**4 BED | 3.5 BATH | 4018 SQ.FT
LOWER FLOOR 1346 SQ.FT**



172 SKYLAND DRIVE

Stone Sisters | www.StoneSisters.com | (250) 862-7675

Tan & grey regions are excluded from the total floor area. All room dimensions and floor areas must be considered approximate and are subject to independent verification. Dimensions are taken from interior laser measurements.

Sophisticated Design & Unmatched Views

- Striking modern exterior with bold white & black contrast
- Expansive windows capture panoramic lake, mountain & valley vistas
- Soaring ceilings and a dramatic floor-to-ceiling stone fireplace
- Real hardwood flooring throughout for timeless appeal

Gourmet Kitchen & Seamless Indoor-Outdoor Flow

- Massive Dekton island, 6-burner Thermador range & beverage centre
- Fully equipped butler's pantry with ample storage and second sink
- Covered deck with seamless access from the main living space—ideal for entertaining
- Electric window coverings and UV-filtering windows for year-round comfort

Private Retreats on Every Level

- Upper-level primary suite with spa-inspired ensuite featuring heated floors & double rain shower
- Two additional upper-level bedrooms with lake views and a shared full bath
- Main-level home office tucked away for privacy
- Lower-level guest bedroom with adjacent full bath—perfect for visitors or extended stays

Entertainment-Focused Lower Level

- Custom wine cellar, elegant lounge area & dedicated gym space
- Engineered hardwood flooring throughout
- Direct walkout access to the outdoor retreat

Resort-Style Backyard Escape

- Saltwater pool with auto cover, hot tub & multiple lounge zones
- Elevated privacy with no rear neighbours and greenbelt protection
- Landscaped with low-maintenance beauty in mind

Smart Utility & Exceptional Features

- 3-zone high-efficiency furnace system
- 240V EV-ready 3-car garage with epoxy flooring
- Solid 8-ft interior doors throughout for a custom-finished feel
- Controlled entry, municipal services, and family-oriented community amenities nearby



RE/MAX Kelowna



CONTACT US FOR MORE INFORMATION:

250.862.7675

INFO@STONESISTERS.COM

STONESISTERS.COM