



722 MARIN CRESCENT

[WWW.STONESISTERS.COM](http://WWW.STONESISTERS.COM)

## DETAILS

<b>ADDRESS</b>	722 Marin Crescent	<b>BEDROOMS</b>	5
		<b>BATHROOMS</b>	6
		<b>FINISHED AREA</b>	4,442 SQ. FT.

## SPECIFICATIONS & FEATURES

<b>LOT SIZE</b>	0.19 acres (78x137)	<b>YEAR BUILT</b>	2007
<b>WATER</b>	Municipal water	<b>ROOF</b>	Asphalt shingle
<b>SEWER</b>	Municipal sewage system	<b>HEATING</b>	Forced Air & heated flooring
<b>VIEWS</b>	Lake, Mountain and Valley	<b>COOLING</b>	Central air conditioning
<b>TAXES</b>	\$11,692.90 – 2025	<b>FIREPLACE</b>	Gas
		<b>GARAGE/DRIVEWAY</b>	Attached Garage (2)

ROOM SIZES – MAIN LEVEL	ROOM SIZES – SECOND LEVEL	ROOM SIZES – LOWER LEVEL
Laundry room : 9'0" x 11'5"	Full ensuite bathroom: 9'0" x 5'4"	Bedroom: 10'11" x 16'9"
Pantry: 12'6" x 6'3"	Bedroom: 12'5" x 13'2"	Bedroom: 12'0" x 15'2"
Dining room: 10'10" x 12'4"	Full ensuite bathroom: 5'4" x 9'2"	Full bathroom: 8'7" x 9'4"
Kitchen: 12'10" x 17'10"	Bedroom: 12'7" x 14'9"	Family room: 13'5" x 17'2"
Living room: 19'6" x 17'0"		Full bathroom: 6'10" x 11'5"
Partial bathroom: 8'2" x 4'10"		Gym: 11'7" x 14'2"
Den: 10'9" x 11'4"		Wine Cellar: 3'5" x 5'0"
Foyer: 22'3" x 10'10"		Recreation room: 27'5" x 16'5"
Full ensuite bathroom: 9'6" x 16'10"		
Primary Bedroom: 17'2" x 13'11"		





Welcome to an exceptional residence in one of Upper Mission's most prestigious enclaves, where breathtaking lake, mountain, and valley views set the stage for inspired living. Thoughtfully designed with both everyday comfort and elevated entertaining in mind, this home masterfully blends architectural detail with luxurious finishes. From the open-concept interior to the seamless connection with resort-style outdoor amenities, every space is crafted for connection, relaxation, and sophistication. Whether gathering with loved ones or enjoying quiet moments poolside, this is a home that feels both expansive and intimate.



















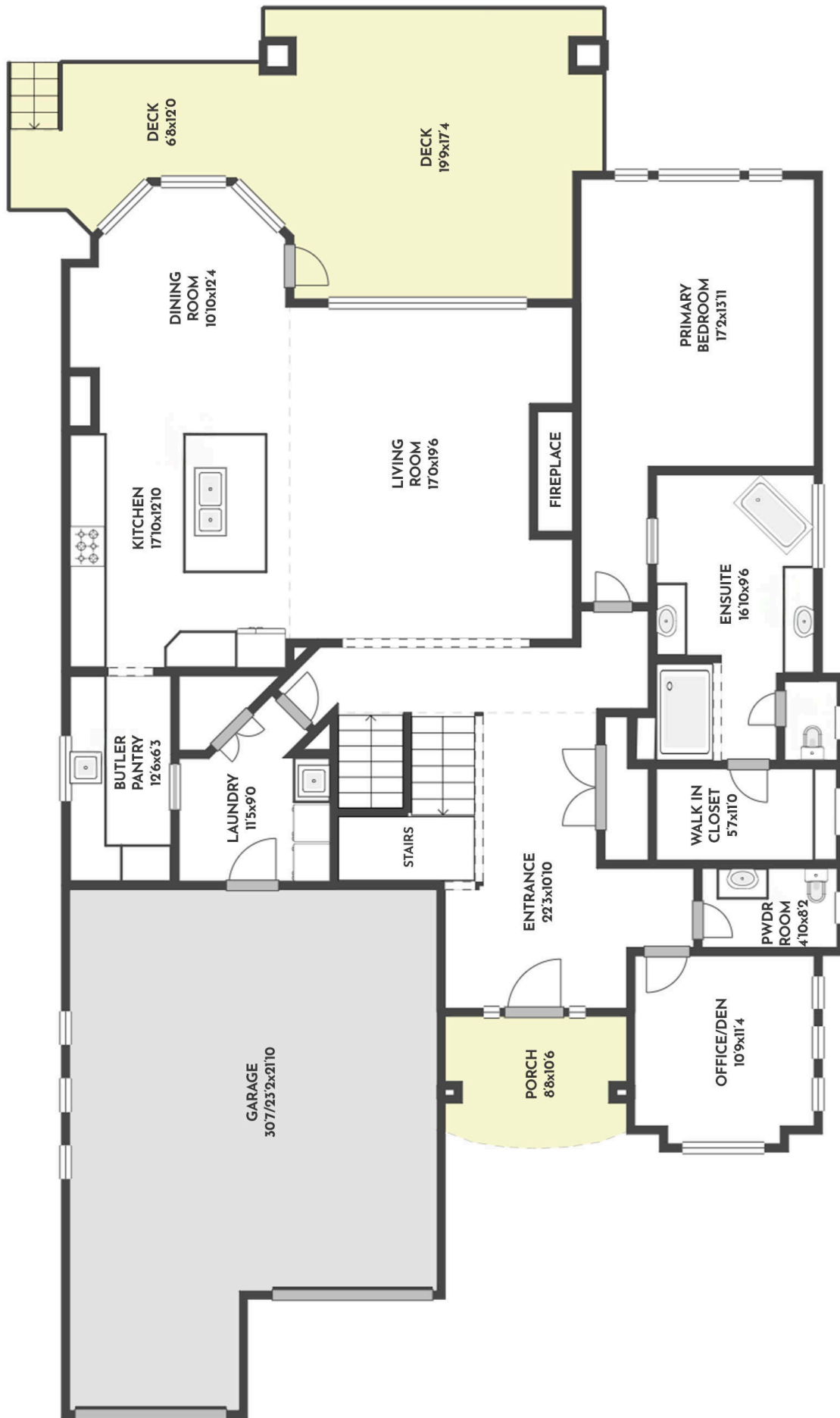








**5 BED | 6 BATH | 4442 SQ.FT  
MAIN FLOOR 2083 SQ.FT**



## 722 MARIN CRESCENT

Stone Sisters | [www.StoneSisters.com](http://www.StoneSisters.com) | (250) 862-7675

Tan & grey regions are excluded from the total floor area. All room dimensions and floor areas must be considered approximate and are subject to independent verification. Dimensions are taken from interior laser measurements.



**5 BED | 6 BATH | 4442 SQ.FT  
UPPER FLOOR 716 SQ.FT**



**722 MARIN CRESCENT**

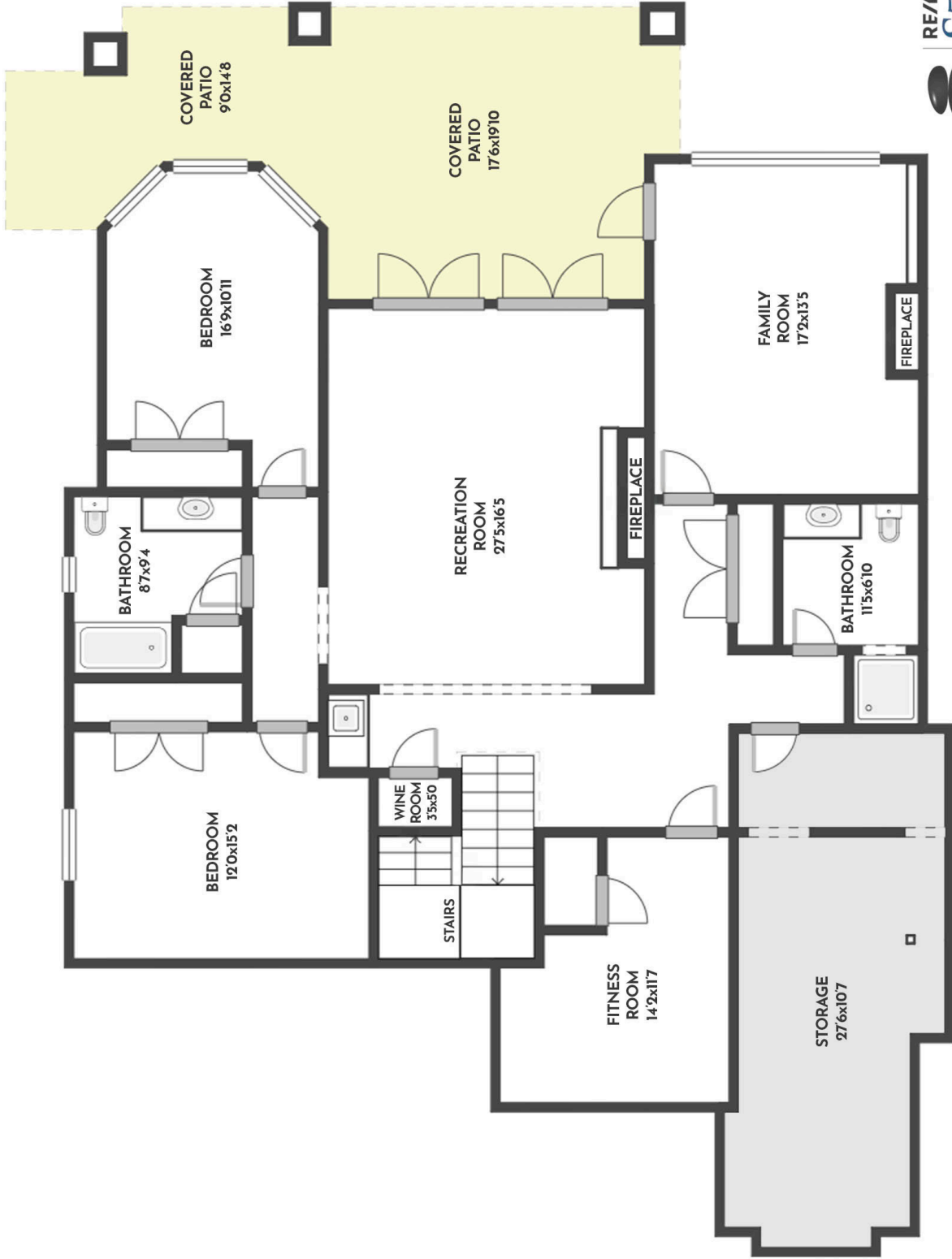
Stone Sisters | [www.StoneSisters.com](http://www.StoneSisters.com) | (250) 862-7675



Tan & grey regions are excluded from the total floor area. All room dimensions and floor areas must be considered approximate and are subject to independent verification. Dimensions are taken from interior laser measurements.



**5 BED | 6 BATH | 4442 SQ.FT  
LOWER FLOOR 1643 SQ.FT**



**722 MARIN CRESCENT**

Stone Sisters | [www.StoneSisters.com](http://www.StoneSisters.com) | (250) 862-7675



Tan & grey regions are excluded from the total floor area. All room dimensions and floor areas must be considered approximate and are subject to independent verification. Dimensions are taken from interior laser measurements.



**Architectural Elegance & Interior Highlights**

- Over 4,400 sq. ft. of refined living space across three bright and spacious levels
- Open-concept main floor with large windows, floor-to-ceiling stone fireplace, and wood beam accents
- Designer lighting, custom window framing, and wide plank hardwood flooring throughout
- Stunning architectural details create a timeless yet contemporary feel

**Chef's Kitchen & Butler's Pantry**

- Thermador appliance package and waterfall-edge quartz island
- Custom cabinetry and high-end fixtures
- Walk-through butler's pantry with wine storage and prep space
- Open sightlines to dining, living, and outdoor spaces—ideal for entertaining

**Private Primary Retreat on the Main Level**

- Spa-style ensuite with freestanding clawfoot tub, heated floors, and oversized glass shower
- Walk-in closet with custom built-ins
- Direct access to the patio for tranquil morning views

**Upstairs Sanctuary for Family or Guests**

- Two spacious upper-level bedrooms, each with ensuite bathrooms and beautiful views
- Perfect for teens, guests, or extended family seeking privacy

**Versatile Walk-Out Lower Level**

- Large recreation room with wet bar and built-in wine cellar
- Two additional bedrooms and two full baths
- Dedicated home gym or flex space
- Seamless access to the resort-style backyard



### **Outdoor Living at Its Finest**

- Inground pool surrounded by lush landscaping
- Wood-fired pizza oven, gas hookups for BBQ or fire table
- Covered patio ideal for Okanagan summer nights
- Landscaped for low maintenance and maximum enjoyment

### **Unbeatable Location**

- Minutes from top-rated schools, boutique shopping, recreation & wineries
- Close to parks, trails, the lakefront & public transit
- Family-friendly, prestigious community in Kelowna's scenic Upper Mission





## REFINED LIVING IN EVERY DETAIL

This remarkable home offers the perfect combination of privacy, functionality, and elevated style—designed to accommodate family life, guests, and unforgettable moments. With five bedrooms, multiple living areas, a chef's kitchen, and outdoor spaces that rival luxury retreats, it's a true entertainer's dream. Set minutes from top-rated schools, boutique shopping, local wineries, and the lake, the lifestyle here is as effortless as it is inspiring. A rare opportunity to enjoy the very best of the Okanagan, every day.





# RE/MAX Kelowna



CONTACT US FOR MORE INFORMATION:

250.862.7675

INFO@STONESISTERS.COM

STONESISTERS.COM