



710 ARBOR VIEW DRIVE

WWW.STONESISTERS.COM

DETAILS

ADDRESS	710 ARBOR VIEW Drive	BEDROOMS	3
		BATHROOMS	4
		FINISHED AREA	5,258 SQ. FT.

SPECIFICATIONS & FEATURES

LOT SIZE	0.24 acres (96 x 152)	YEAR BUILT	2008
WATER	Municipal water	ROOF	Asphalt shingle
SEWER	Municipal sewage system	HEATING	Forced air
VIEWS	Lake, Mountain and Valley	COOLING	Central air conditioning
TAXES	\$11,692.90 - 2025	FIREPLACE	4 Gas
		GARAGE/DRIVEWAY	Attached Garage (3)

ROOM SIZES – MAIN LEVEL

Laundry room : 10'3" x 8'8"

Full ensuite bathroom : 16'9" x 12'10"

Library : 8'9" x 8'6"

Primary Bedroom : 13'9" x 14'8"

Den : 10'11" x 14'0"

Partial bathroom : 7'7" x 8'8"

Pantry : 8'0" x 15'0"

Kitchen : 22'1" x 16'3"

Dining room : 13'9" x 16'8"

Living room : 31'10" x 17'0"

Foyer : 14'9" x 7'5"

ROOM SIZES – LOWER LEVEL

Full bathroom : 13'10" x 6'7"

Laundry room : 7'9" x 7'10"

Office : 8'10" x 7'11"

Bedroom : 13'9" x 12'4"

Full ensuite bathroom : 11'0" x 4'11"

Bedroom : 15'4" x 13'5"

Gym : 11'2" x 11'9"

Theater : 17'10" x 16'0"

Wine Cellar : 6'0" x 10'9"

Wet Bar : 10'10" x 19'4"

Family room : 28'3" x 16'7"



Welcome to an architectural masterpiece in the heart of Kelowna's Upper Mission—where timeless craftsmanship meets resort-style luxury. Built by renowned Frame Construction and honoured with a prestigious Tommie Award, this exceptional residence was thoughtfully designed to elevate every aspect of living. From soaring ceilings and rich hardwood flooring to panoramic lake, city, and mountain views, no detail has been overlooked. This is a home where elegance and comfort intertwine, offering a lifestyle of unmatched quality, privacy, and sophistication.







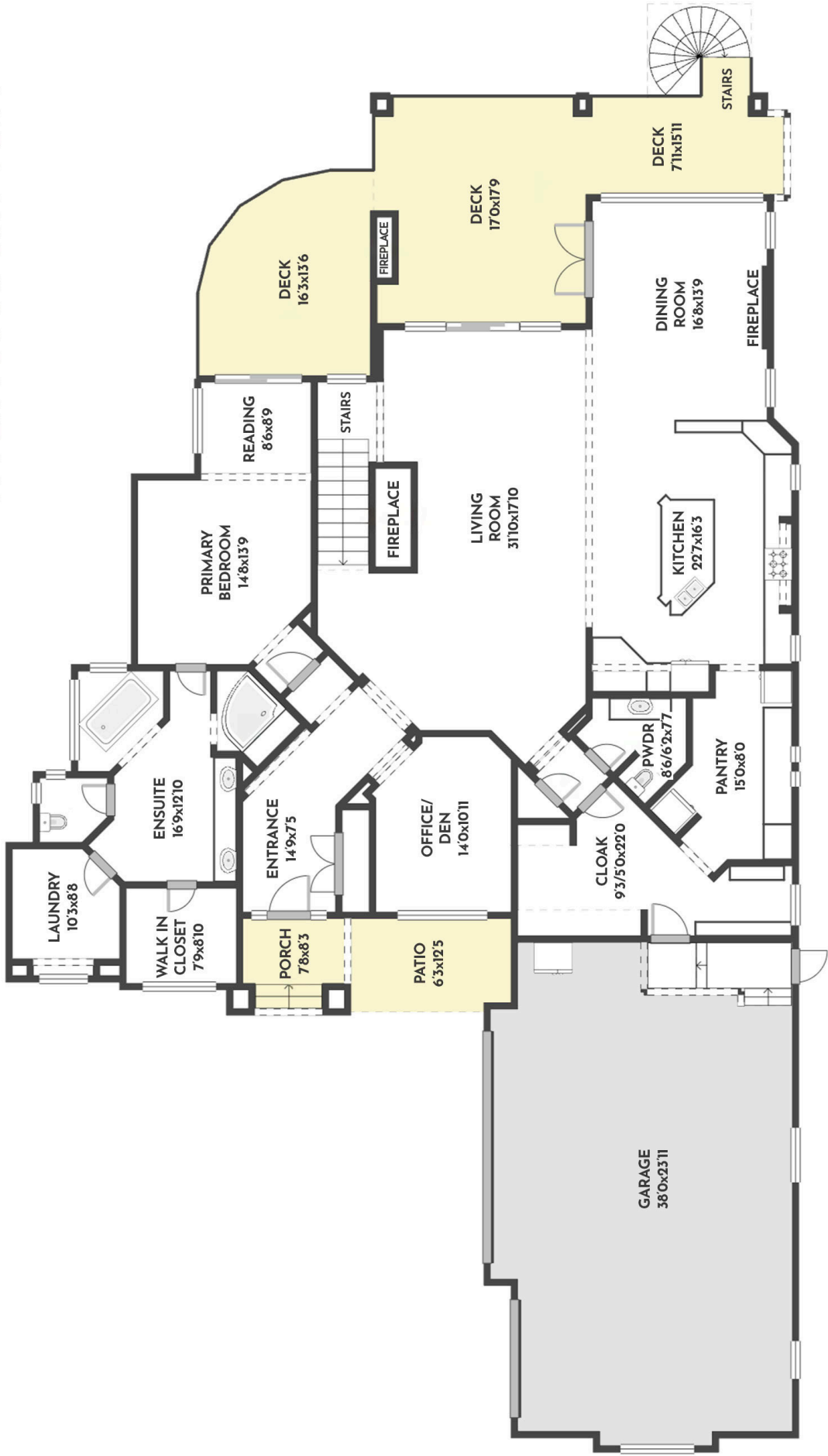








3 BED + DEN | 3.5 BATH | 5258 SQ.FT
UPPER FLOOR 2810 SQ.FT

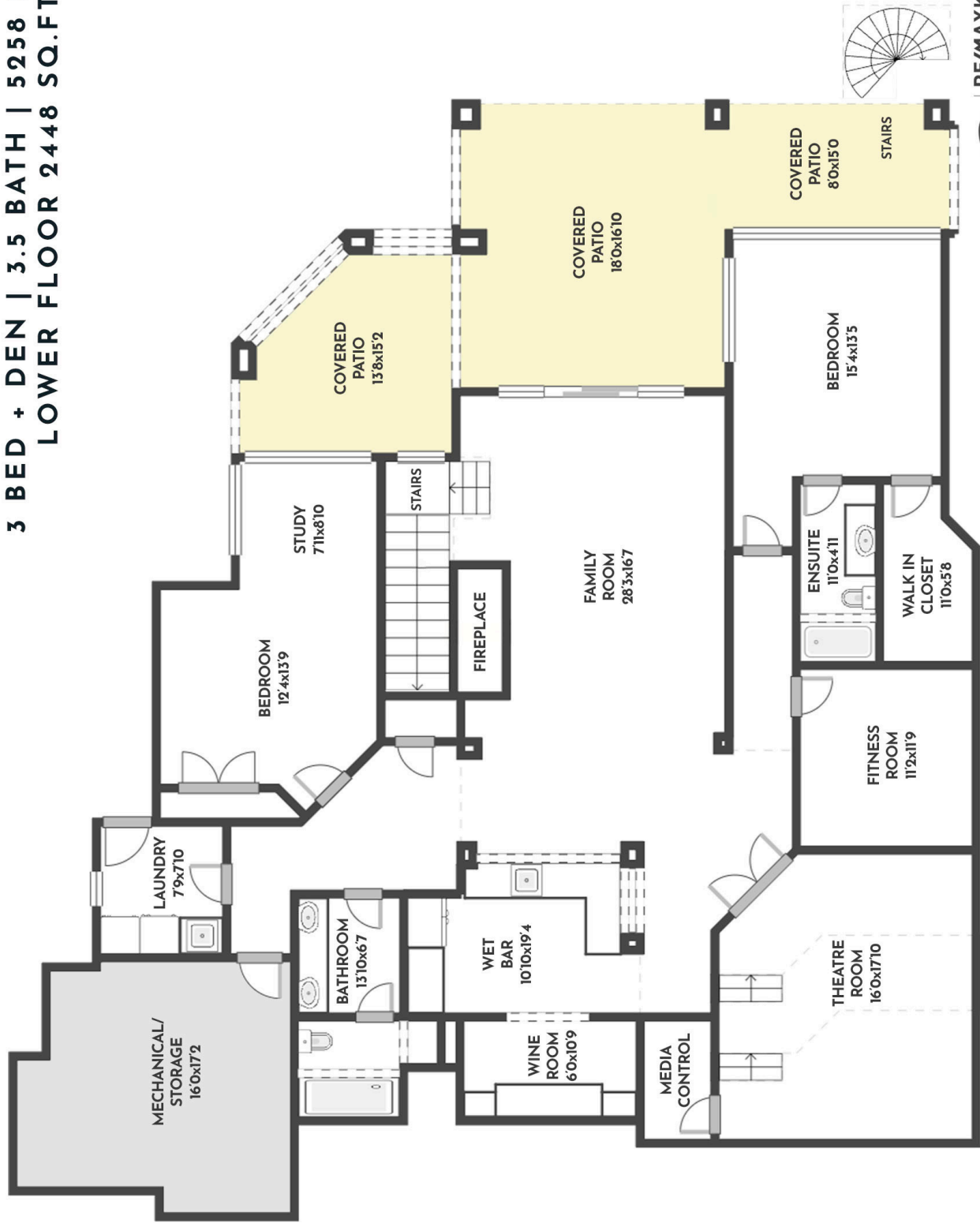


710 ARBOR VIEW DRIVE

Stone Sisters | www.StoneSisters.com | (250) 862-7675

Tan & grey regions are excluded from the total floor area. All room dimensions and floor areas must be considered approximate and are subject to independent verification. Dimensions are taken from interior laser measurements.

3 BED + DEN | 3.5 BATH | 5258 SQ.FT
LOWER FLOOR 2448 SQ.FT



710 ARBOR VIEW DRIVE

Stone Sisters | www.StoneSisters.com | (250) 862-7675

Tan & grey regions are excluded from the total floor area. All room dimensions and floor areas must be considered approximate and are subject to independent verification. Dimensions are taken from interior laser measurements.

Grand Interiors with Custom Craftsmanship

- Over 5,200 sq. ft. of finely appointed living space across two luxurious levels
- Rich hardwood floors, soaring custom ceilings, and natural stone fireplaces create a warm, yet refined ambiance
- Floor-to-ceiling windows flood the home with light and frame panoramic Okanagan views
- Thoughtful layout for everyday living, entertaining, and retreat-like comfort

Chef-Inspired Kitchen with Butler's Pantry

- Equipped with a full JennAir premium appliance package
- Oversized granite island ideal for gathering and serving
- Walk-through butler's pantry with prep sink and wine storage
- Seamlessly connects to the dining area, living room & covered outdoor spaces

Main-Level Primary Suite Retreat

- A tranquil sanctuary with private deck access and reading nook
- Spa-style ensuite includes freestanding tub, oversized shower & dual vanities
- Custom walk-in closet for ultimate organization and luxury living

Lower Level: Designed for Entertaining & Wellness

- Tiered theatre room, ideal for movie nights with family and friends
- Full bar and lounge area with adjacent wine cellar
- Spacious family room, home gym, and two guest bedrooms—each with ensuite or nearby bathroom
- Walk-out access to the private, resort-style backyard

Outdoor Paradise with Saltwater Pool

- Heated saltwater pool with waterfall feature and hot tub
- Covered outdoor living space with fireplace and sweeping lake views
- Professionally landscaped with fencing and mature greenery for privacy
- Ideal for both quiet mornings and lively evening entertaining

Location & Lifestyle

- Moments from top-rated schools, nature trails, and boutique amenities
- Easy access to public transit, parks, shopping, and recreation
- Set in a family-oriented, exclusive Upper Mission enclave

A Legacy Home of Unmatched Quality

- Built with enduring materials, award-winning design, and an eye for detail
- Rare opportunity to own a resort-style estate in one of Kelowna's most desirable neighbourhoods
- This home isn't just luxurious—it's exceptional in every sense



A MASTERPIECE OF TIMELESS LUXURY

Whether hosting unforgettable gatherings or enjoying peaceful moments by the pool, this extraordinary home delivers the ultimate in indoor-outdoor living. Every space has been meticulously crafted—from the tiered theatre room and wine cellar to the serene primary suite and lush backyard sanctuary. With top-tier amenities, enduring design, and a location just minutes from schools, trails, and urban conveniences, this estate is more than a home—it's a statement. A once-in-a-lifetime opportunity to live luxuriously, every single day.



RE/MAX Kelowna



CONTACT US FOR MORE INFORMATION:

250.862.7675

INFO@STONESISTERS.COM

STONESISTERS.COM