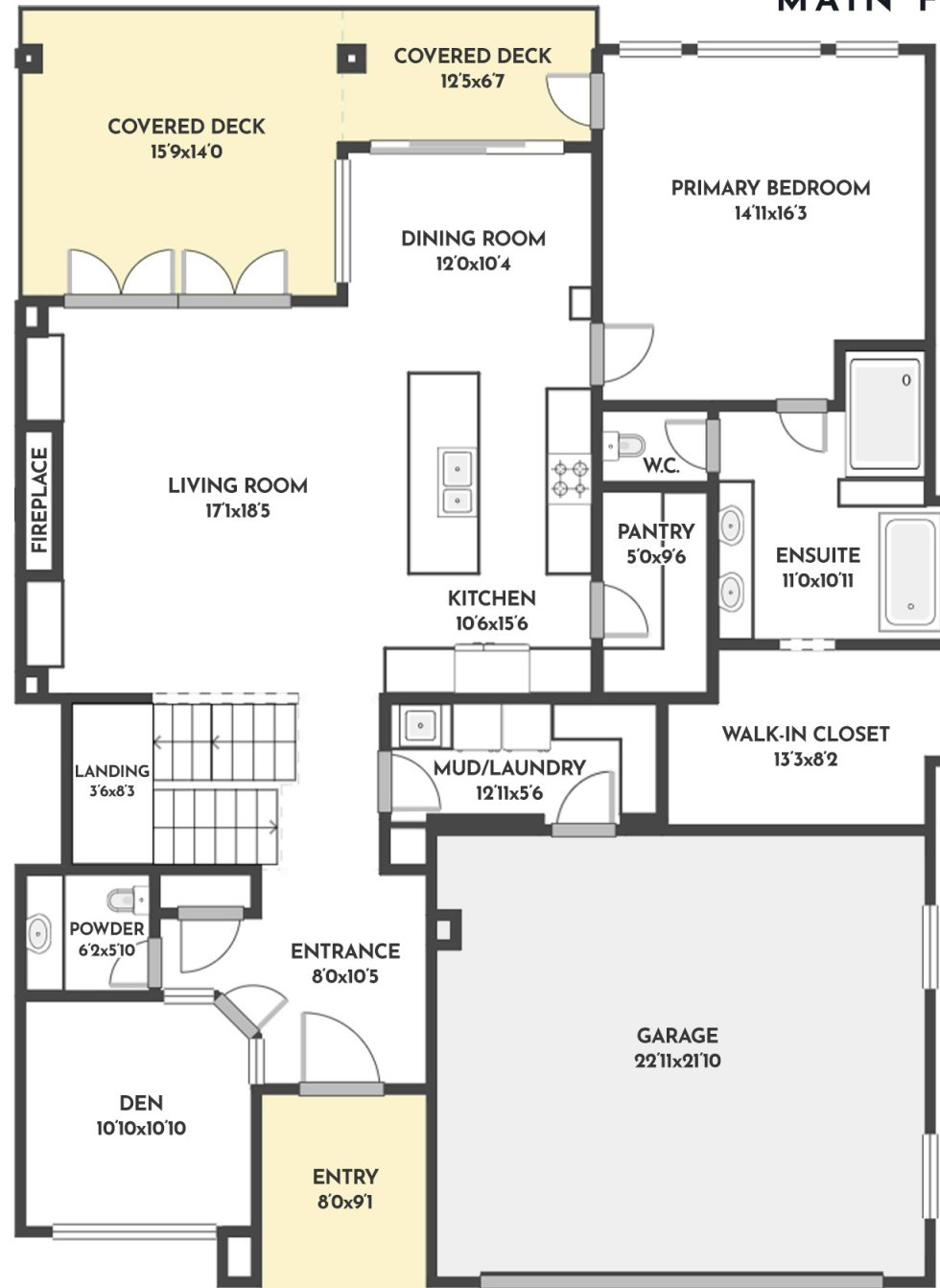


**5 BED + DEN | 5.5 BATH | 4343 SQ.FT  
MAIN FLOOR 1779 SQ.FT**



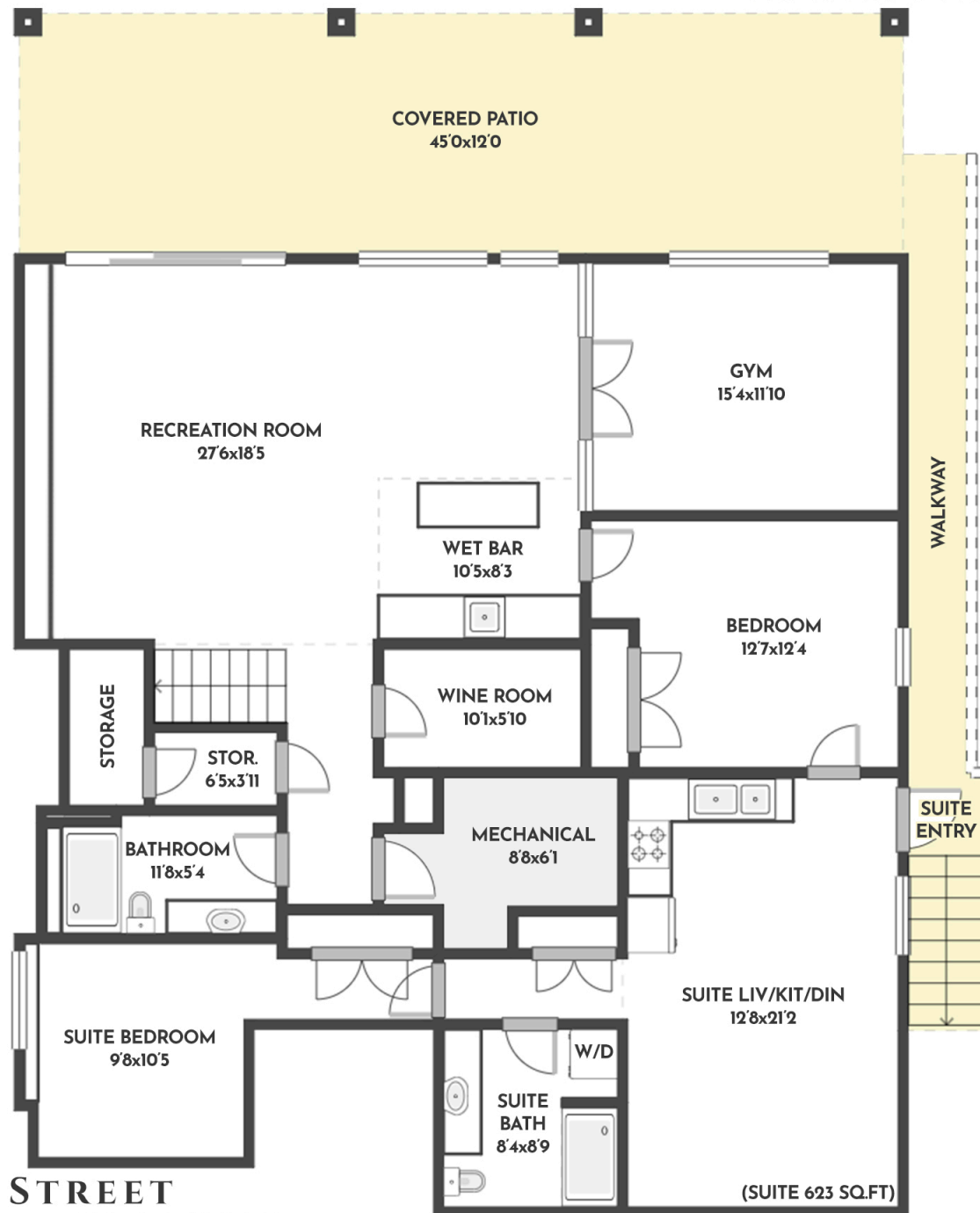
**1016 EMSLIE STREET**

Stone Sisters | [www.StoneSisters.com](http://www.StoneSisters.com) | (250) 862-7675



Tan & grey regions are excluded from the total floor area. All room dimensions and floor areas must be considered approximate and are subject to independent verification. Dimensions are taken from interior laser measurements.

5 BED + DEN | 5.5 BATH | 4343 SQ.FT  
LOWER FLOOR 1682 SQ.FT



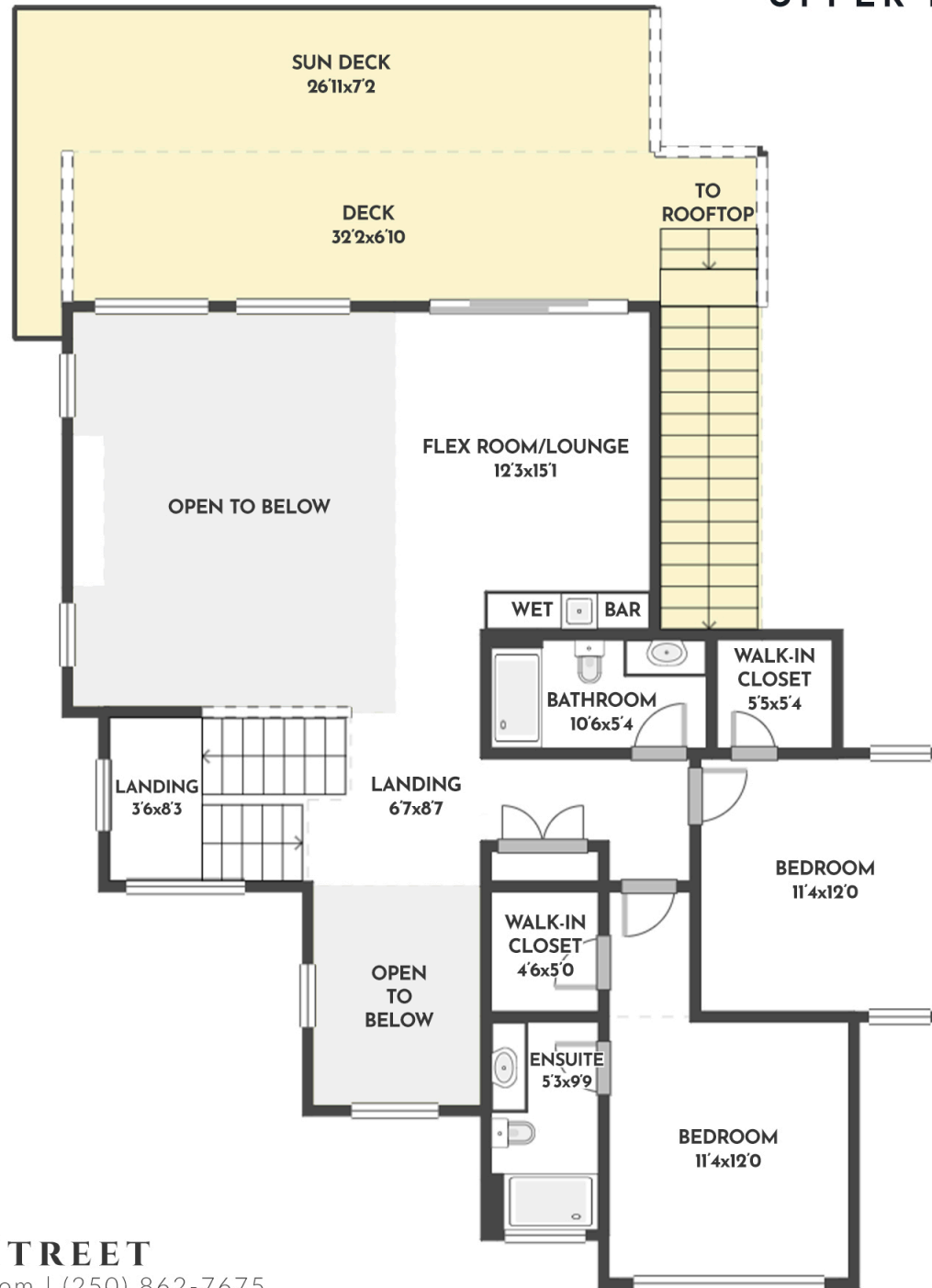
1016 EMSLIE STREET

Stone Sisters | [www.StoneSisters.com](http://www.StoneSisters.com) | (250) 862-7675



Tan & grey regions are excluded from the total floor area. All room dimensions and floor areas must be considered approximate and are subject to independent verification. Dimensions are taken from interior laser measurements.

**5 BED + DEN | 5.5 BATH | 4343 SQ.FT**  
**UPPER FLOOR 882 SQ.FT**



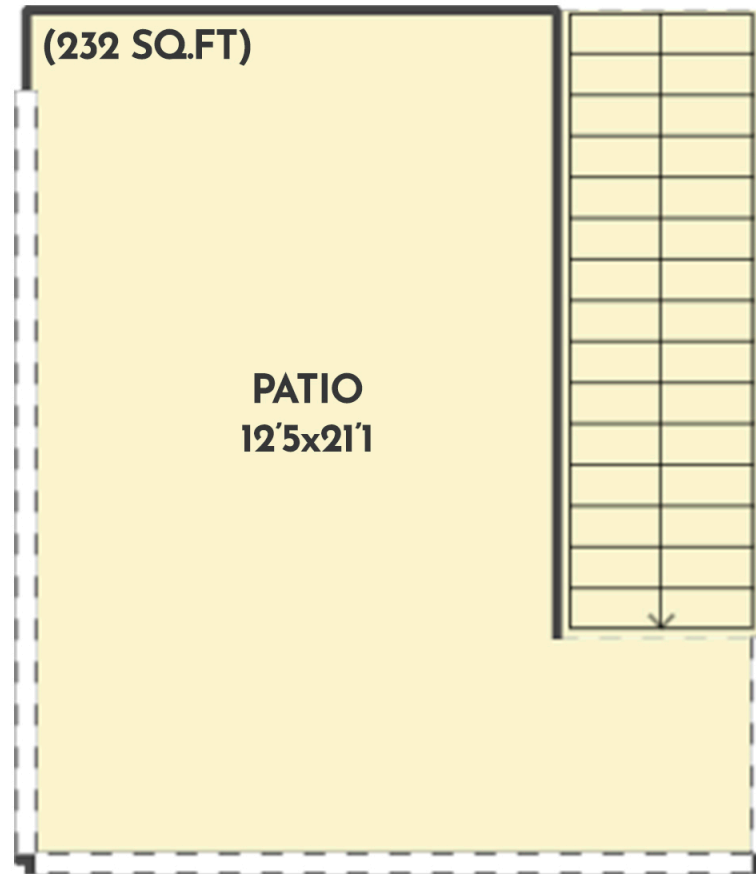
**1016 EMSLIE STREET**

Stone Sisters | [www.StoneSisters.com](http://www.StoneSisters.com) | (250) 862-7675



Tan & grey regions are excluded from the total floor area. All room dimensions and floor areas must be considered approximate and are subject to independent verification. Dimensions are taken from interior laser measurements.

**5 BED + DEN | 5.5 BATH | 4343 SQ.FT  
ROOFTOP PATIO**



**1016 EMSLIE STREET**

Stone Sisters | [www.StoneSisters.com](http://www.StoneSisters.com) | (250) 862-7675



Tan & grey regions are excluded from the total floor area. All room dimensions and floor areas must be considered approximate and are subject to independent verification. Dimensions are taken from interior laser measurements.