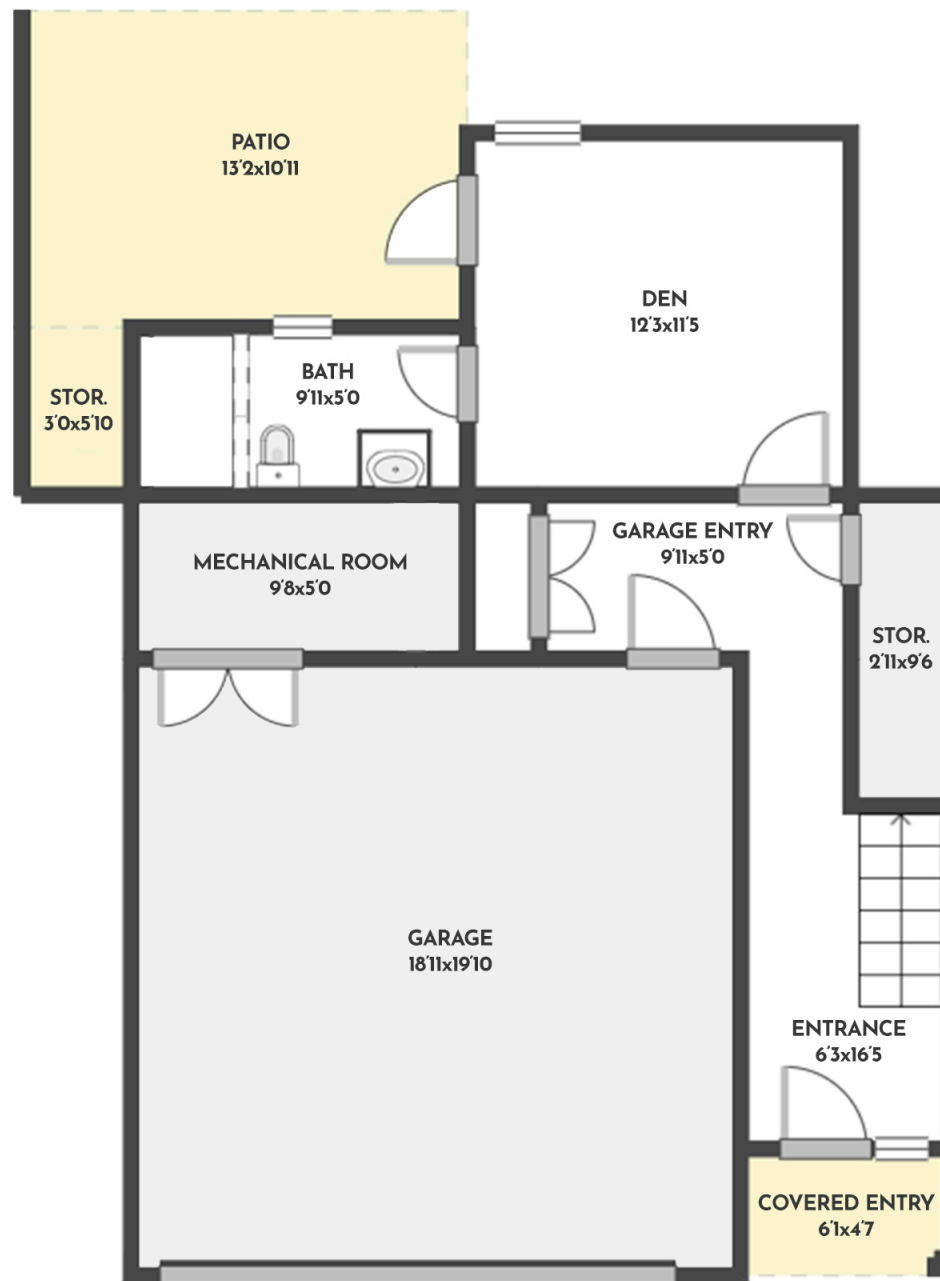


**3 BED + DEN | 2 BATH + 2 HALF BATH | 1896 SQ.FT**  
**GROUND FLOOR 363 SQ.FT**



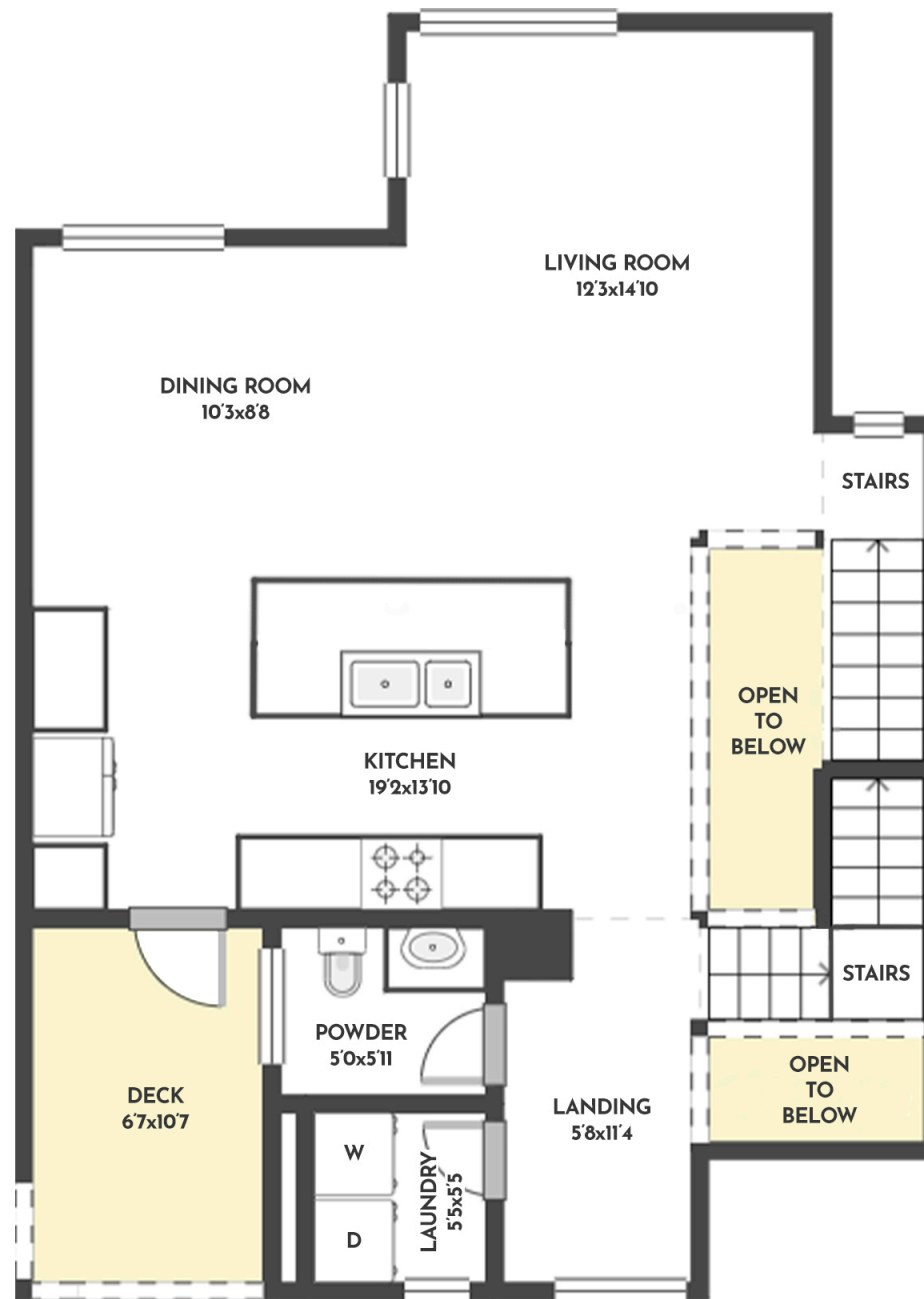
**#17 - 3719 WOODSDALE ROAD**

Stone Sisters | [www.StoneSisters.com](http://www.StoneSisters.com) | (250) 862-7675



Tan & grey regions are excluded from the total floor area. All room dimensions and floor areas must be considered approximate and are subject to independent verification. Dimensions are taken from interior laser measurements.

**3 BED + DEN | 2 BATH + 2 HALF BATH | 1896 SQ.FT**  
**FIRST FLOOR 771 SQ.FT**



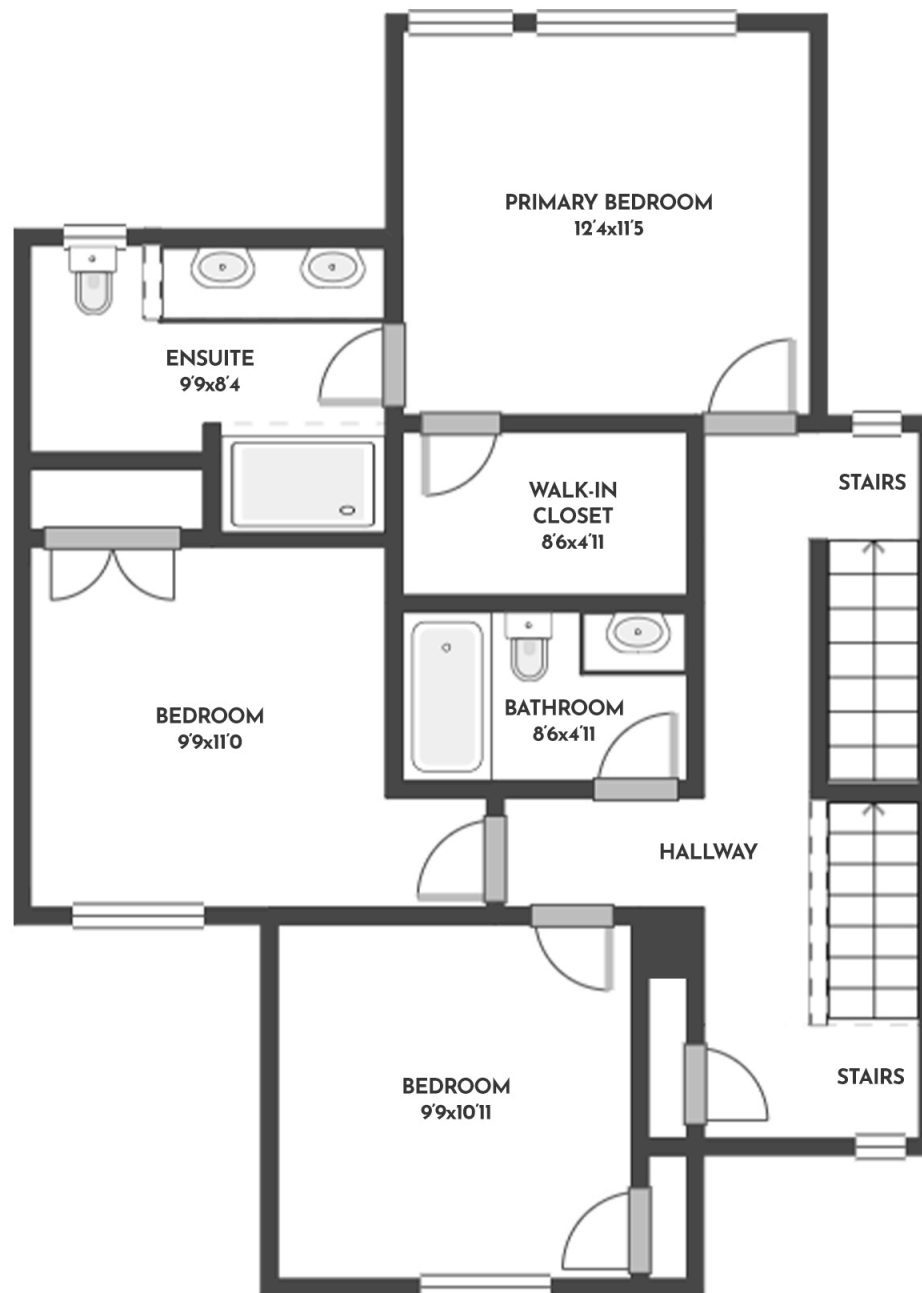
**#17 - 3719 WOODSDALE ROAD**

Stone Sisters | [www.StoneSisters.com](http://www.StoneSisters.com) | (250) 862-7675



Tan & grey regions are excluded from the total floor area. All room dimensions and floor areas must be considered approximate and are subject to independent verification. Dimensions are taken from interior laser measurements.

**3 BED + DEN | 2 BATH + 2 HALF BATH | 1896 SQ.FT  
SECOND FLOOR 722 SQ.FT**



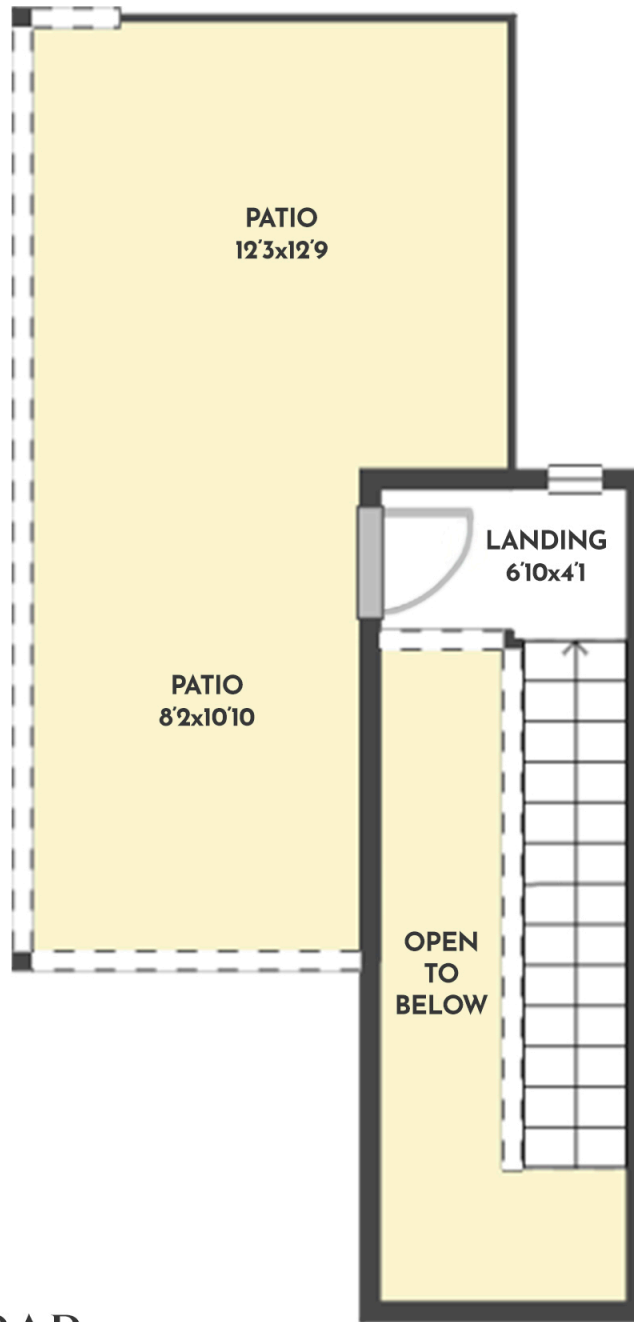
**#17 - 3719 WOODSDALE ROAD**

Stone Sisters | [www.StoneSisters.com](http://www.StoneSisters.com) | (250) 862-7675



Tan & grey regions are excluded from the total floor area. All room dimensions and floor areas must be considered approximate and are subject to independent verification. Dimensions are taken from interior laser measurements.

**3 BED + DEN | 2 BATH + 2 HALF BATH | 1896 SQ.FT**  
**ROOFTOP PATIO 40 SQ.FT**



**#17 - 3719 WOODSDALE ROAD**

Stone Sisters | [www.StoneSisters.com](http://www.StoneSisters.com) | (250) 862-7675



Tan & grey regions are excluded from the total floor area. All room dimensions and floor areas must be considered approximate and are subject to independent verification. Dimensions are taken from interior laser measurements.