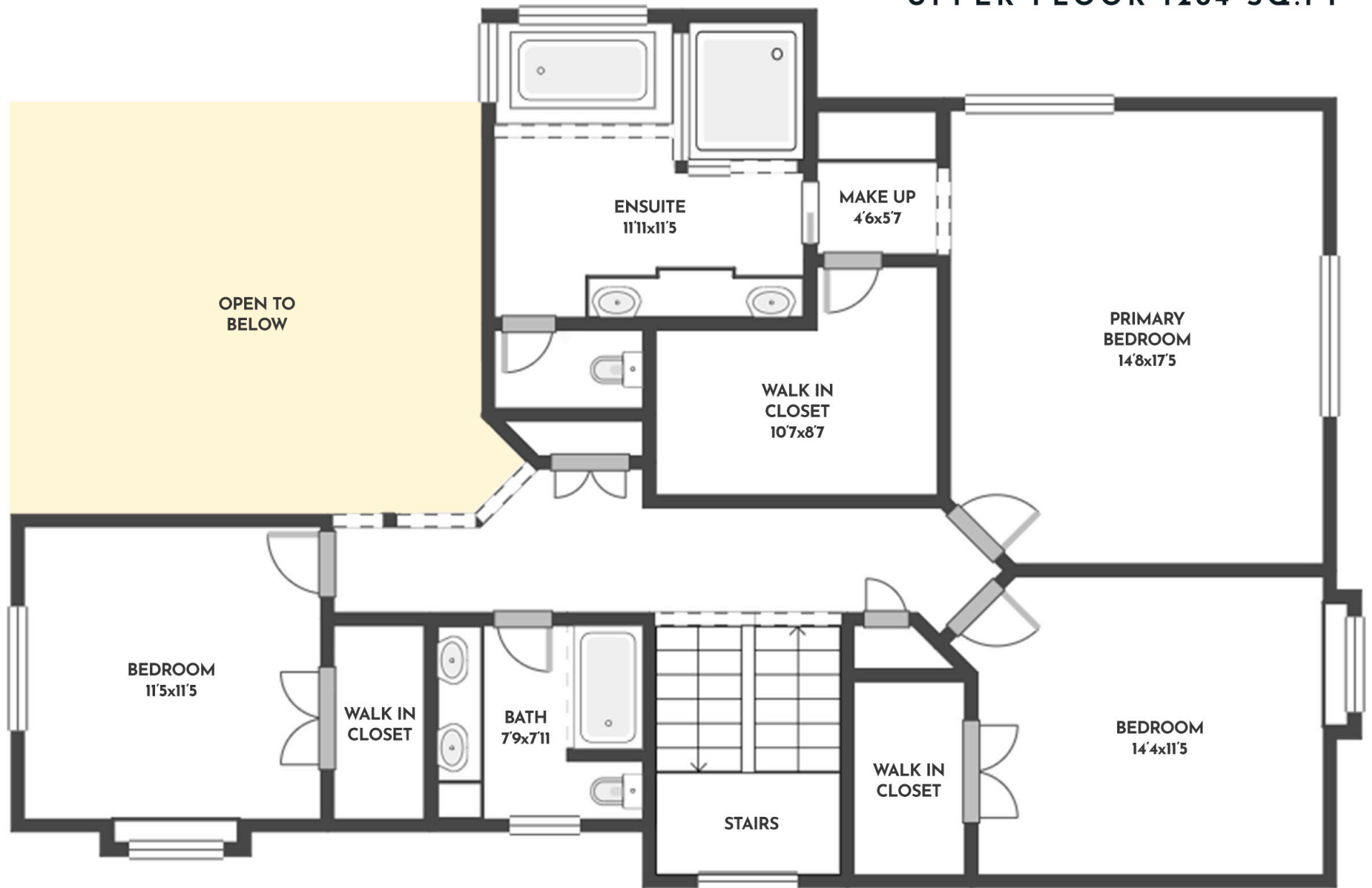


5 BED + DEN | 3.5 BATH | 4374 SQ.FT
UPPER FLOOR 1284 SQ.FT



369 FARRON COURT

Stone Sisters | www.StoneSisters.com | (250) 862-7675



Tan & grey regions are excluded from the total floor area. All room dimensions and floor areas must be considered approximate and are subject to independent verification. Dimensions are taken from interior laser measurements.

5 BED + DEN | 3.5 BATH | 4374 SQ.FT
MAIN FLOOR 1700 SQ.FT



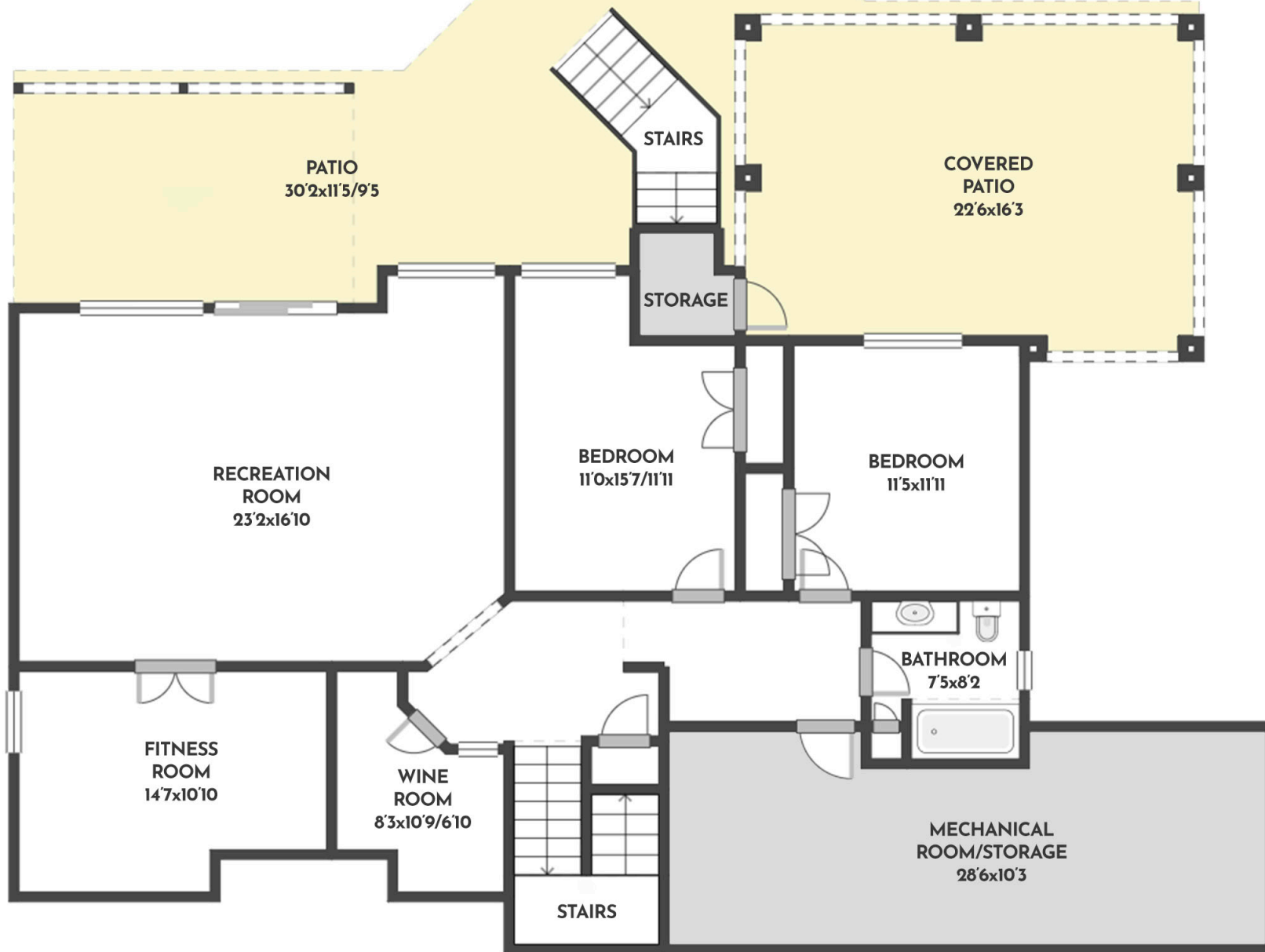
369 FARRON COURT

Stone Sisters | www.StoneSisters.com | (250) 862-7675



Tan & grey regions are excluded from the total floor area. All room dimensions and floor areas must be considered approximate and are subject to independent verification. Dimensions are taken from interior laser measurements.

5 BED + DEN | 3.5 BATH | 4374 SQ.FT
LOWER FLOOR 1390 SQ.FT



369 FARRON COURT

Stone Sisters | www.StoneSisters.com | (250) 862-7675



RE/MAX Kelowna
**STONE
SISTERS**

Tan & grey regions are excluded from the total floor area. All room dimensions and floor areas must be considered approximate and are subject to independent verification. Dimensions are taken from interior laser measurements.