

4 BED | 4.5 BATH | 4476 SQ.FT  
MAIN FLOOR 1800 SQ.FT



## 1515 PINOT NOIR DRIVE

Stone Sisters | [www.StoneSisters.com](http://www.StoneSisters.com) | (250) 862-7675



Tan & grey regions are excluded from the total floor area. All room dimensions and floor areas must be considered approximate and are subject to independent verification. Dimensions are taken from interior laser measurements.

**4 BED | 4.5 BATH | 4 CAR GARAGE**  
**LOWER FLOOR 21**

**PATIO AREA**

**IN-GROUND HOT TUB**

**BEDROOM** 13'5x14'11

**BATHROOM** 6'0x9'8

**WASH ROOM** 5'6x9'8

**PORCH** 4'4x3'4

**POOL DECK**

**COVERED DECK** 15'6x5'3

**STAIRS**

**WALK-IN CLOSET** 9'1x6'11

**HALLWAY** 16'7x3'11

**FAMILY ROOM** 16'9x18'9

**HOME FITNESS ROOM** 25'5x21'3/13'9

**WINE ROOM** 11'9x9'1

**WETBAR** 9'10x9'0

**HALL** 7'5x13'10

**LANDING** 7'4x4'1

**Mechanical Room** 14'11x9'2

**Fireplace**

**BEDROOM** 13'5x14'11

**Nook** 8'1x5'5

**WALK-IN CLOSET** 4'11x5'9

**WALK-IN CLOSET** 4'3x5'9

**ENSUITE** 7'1x13'0

**PINOT NOIR DRIVE**  
 www.StoneSisters.com | (250) 862-7675

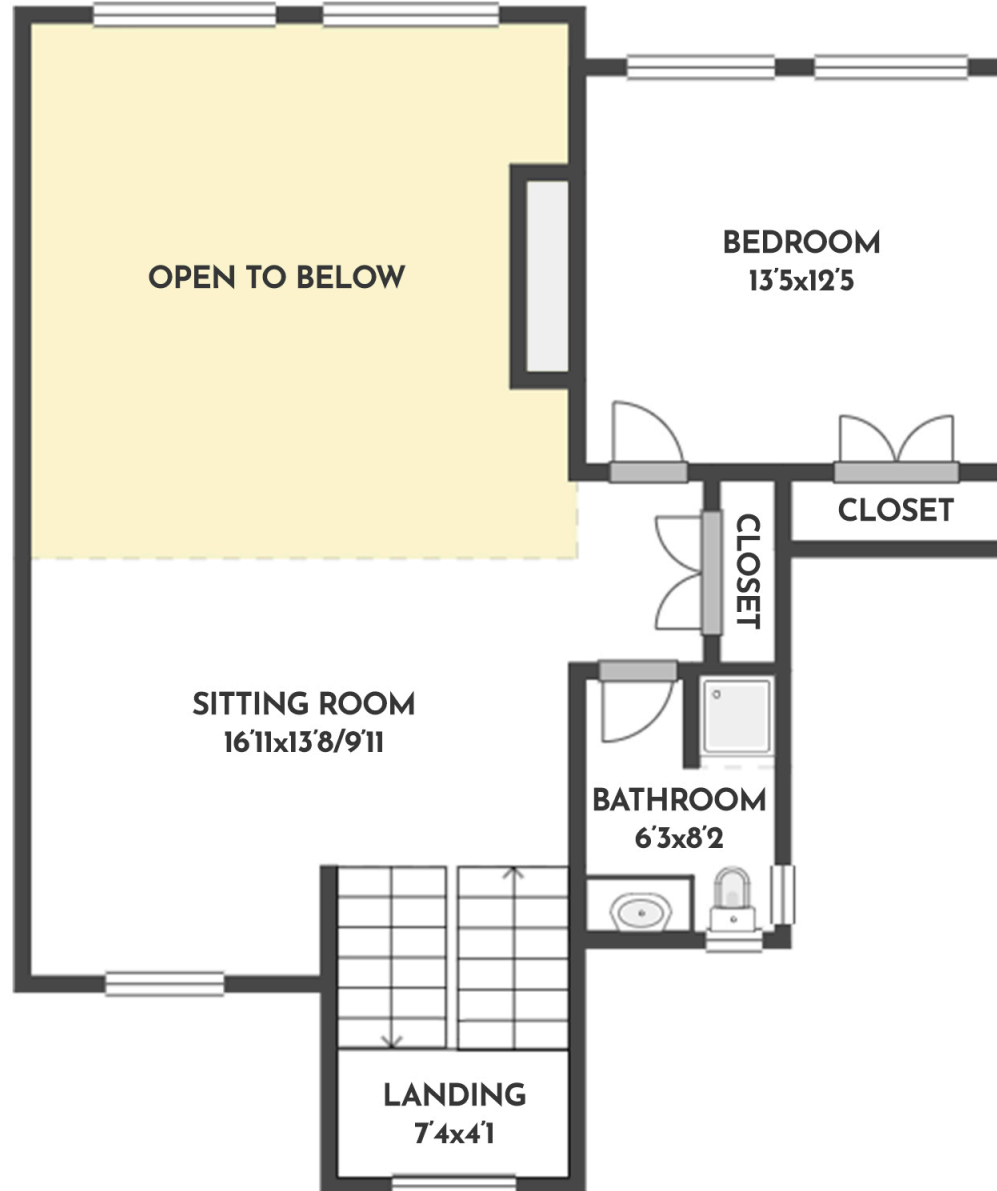
Stone Sisters | [www.StoneSisters.com](http://www.StoneSisters.com) | (250) 862-7675



RE/MAX Kelowna  
**STONE**  
**SISTERS**

Tan & grey regions are excluded from the total floor area. All room dimensions and floor areas must be considered approximate and are subject to independent verification. Dimensions are taken from interior laser measurements.

4 BED | 4.5 BATH | 4476 SQ.FT  
UPPER FLOOR 559 SQ.FT



## 1515 PINOT NOIR DRIVE

Stone Sisters | [www.StoneSisters.com](http://www.StoneSisters.com) | (250) 862-7675



Tan & grey regions are excluded from the total floor area. All room dimensions and floor areas must be considered approximate and are subject to independent verification. Dimensions are taken from interior laser measurements.