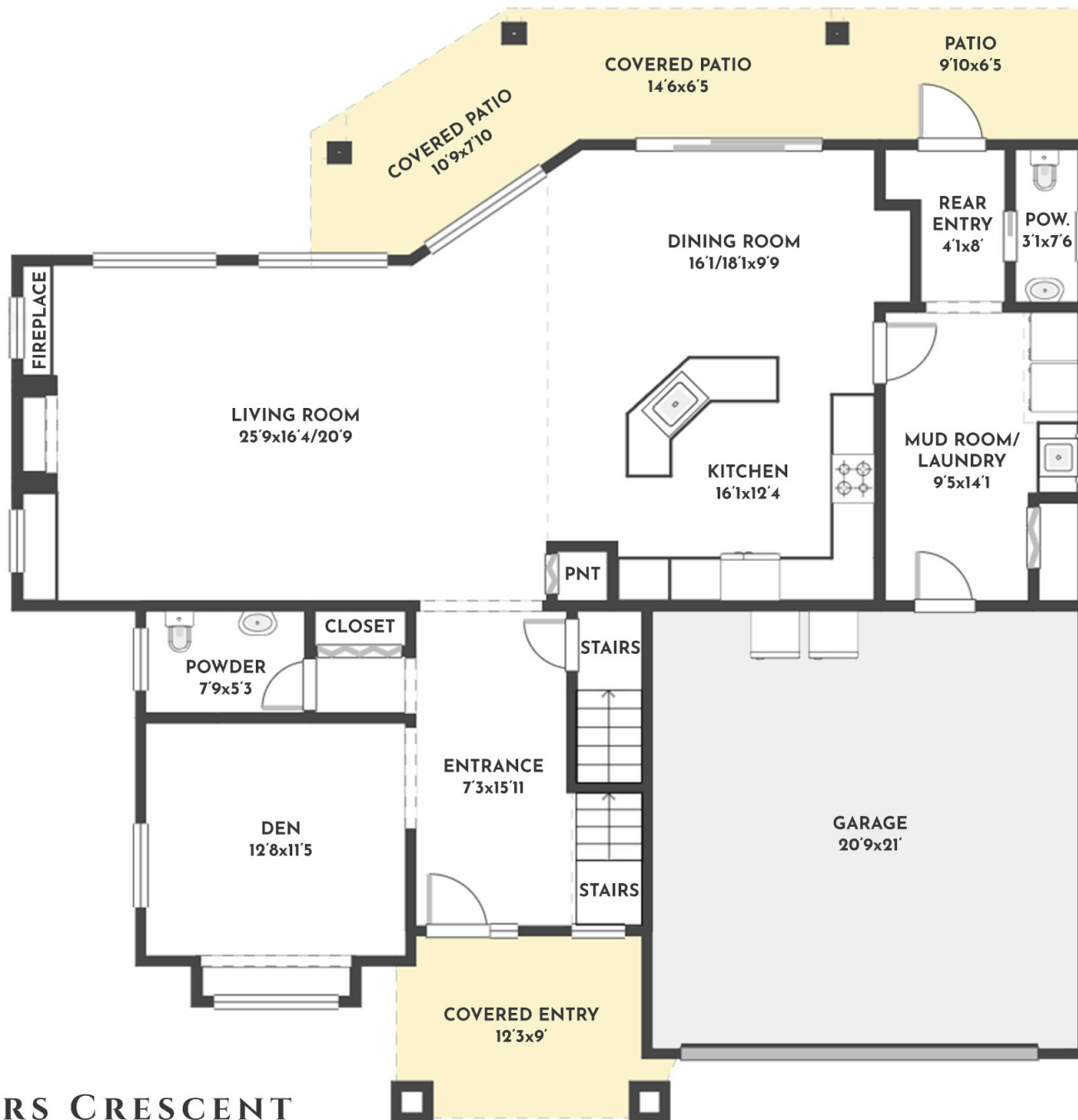


5 BED | 3 BATH + 2 HALF BATH | 3866 SQ.FT
MAIN FLOOR | 1419 SQ.FT



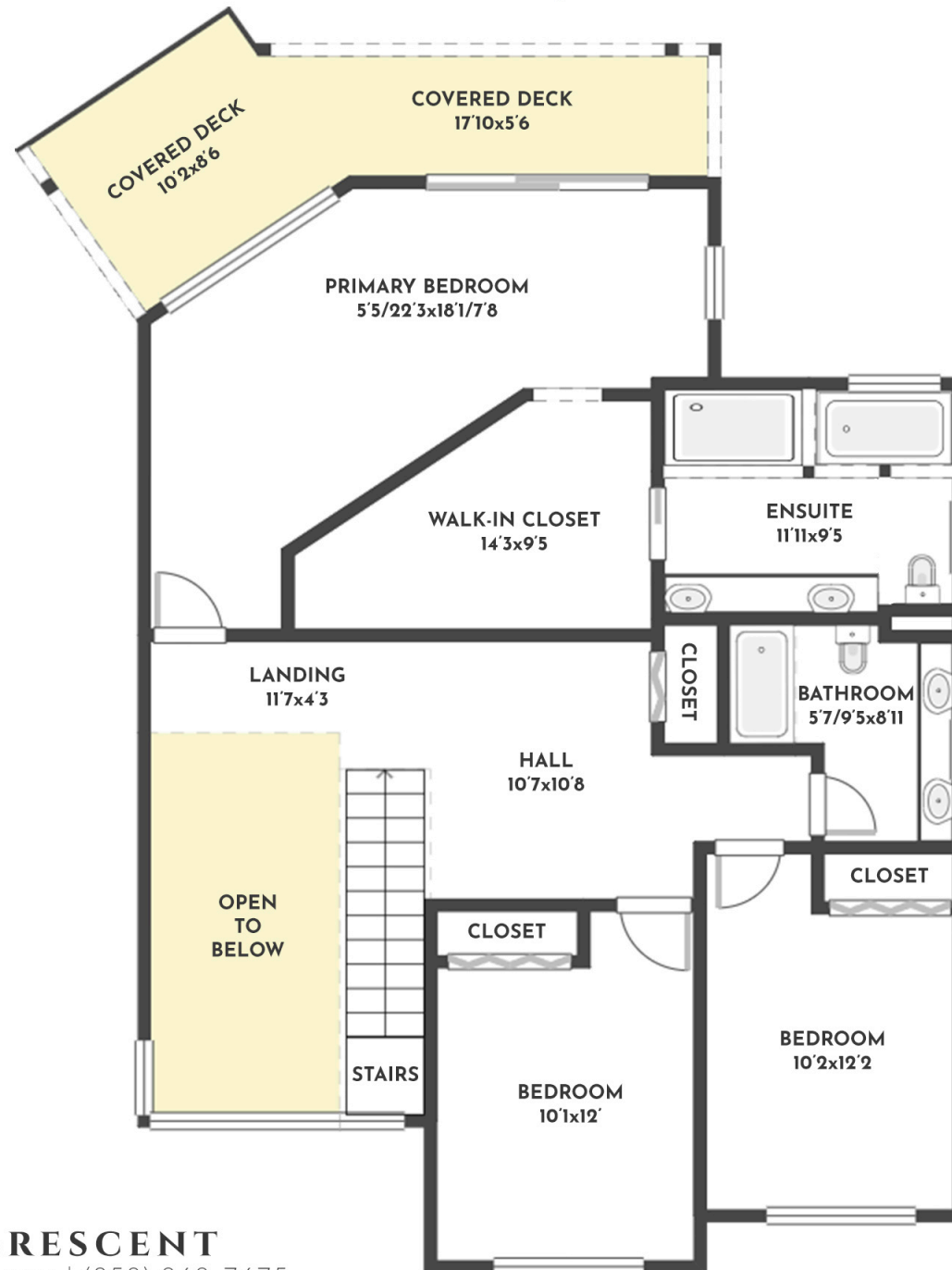
829 KUIPERS CRESCENT

Stone Sisters | www.StoneSisters.com | (250) 862-7675



Tan & grey regions are excluded from the total floor area. All room dimensions and floor areas must be considered approximate and are subject to independent verification. Dimensions are taken from interior laser measurements.

5 BED | 3 BATH + 2 HALF BATH | 3866 SQ.FT
UPPER FLOOR | 1119 SQ.FT



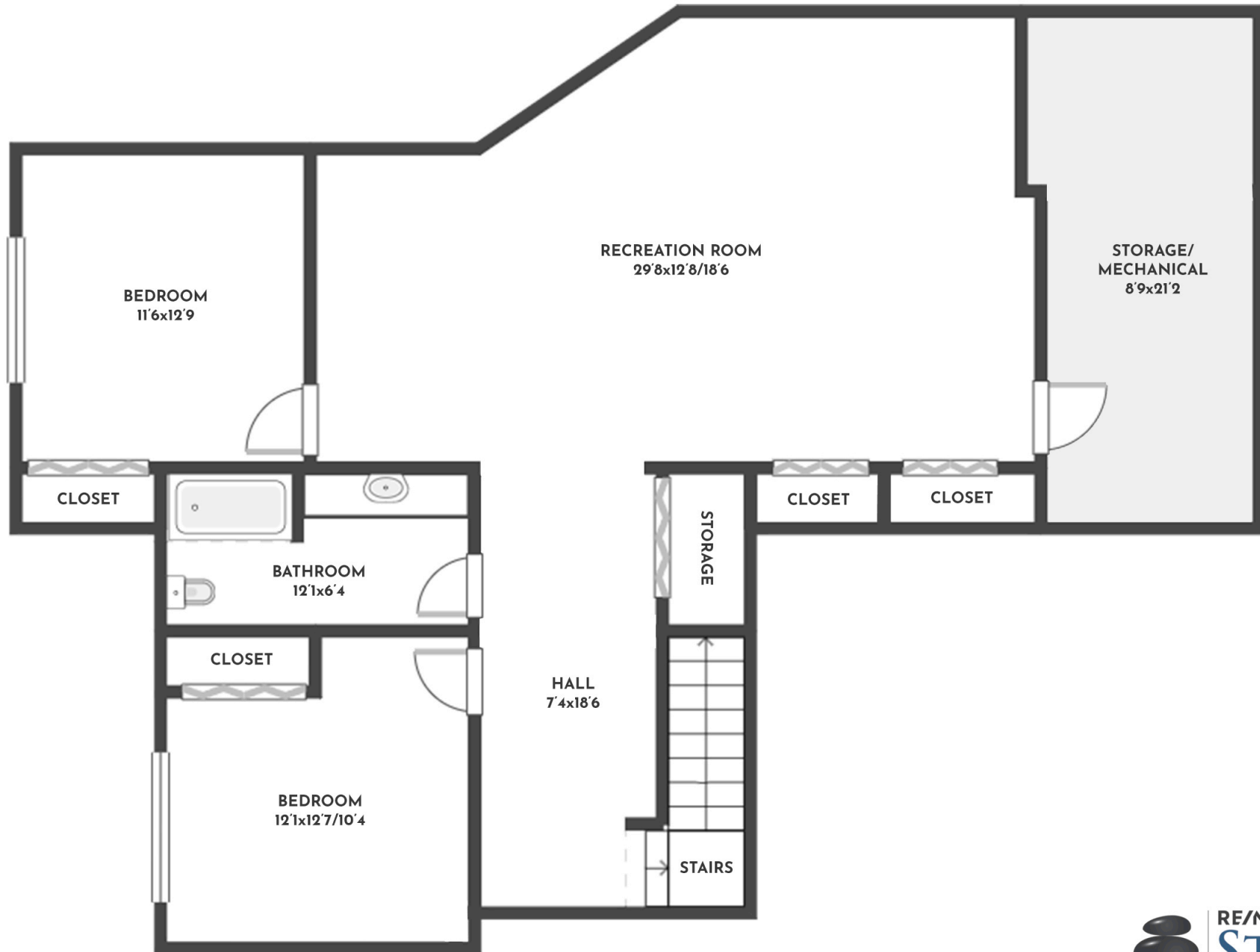
829 KUIPERS CRESCENT

Stone Sisters | www.StoneSisters.com | (250) 862-7675



Tan & grey regions are excluded from the total floor area. All room dimensions and floor areas must be considered approximate and are subject to independent verification. Dimensions are taken from interior laser measurements.

5 BED | 3 BATH + 2 HALF BATH | 3866 SQ.FT
LOWER FLOOR | 1328 SQ.FT



829 KUIPERS CRESCENT

Stone Sisters | www.StoneSisters.com | (250) 862-7675



Tan & grey regions are excluded from the total floor area. All room dimensions and floor areas must be considered approximate and are subject to independent verification. Dimensions are taken from interior laser measurements.