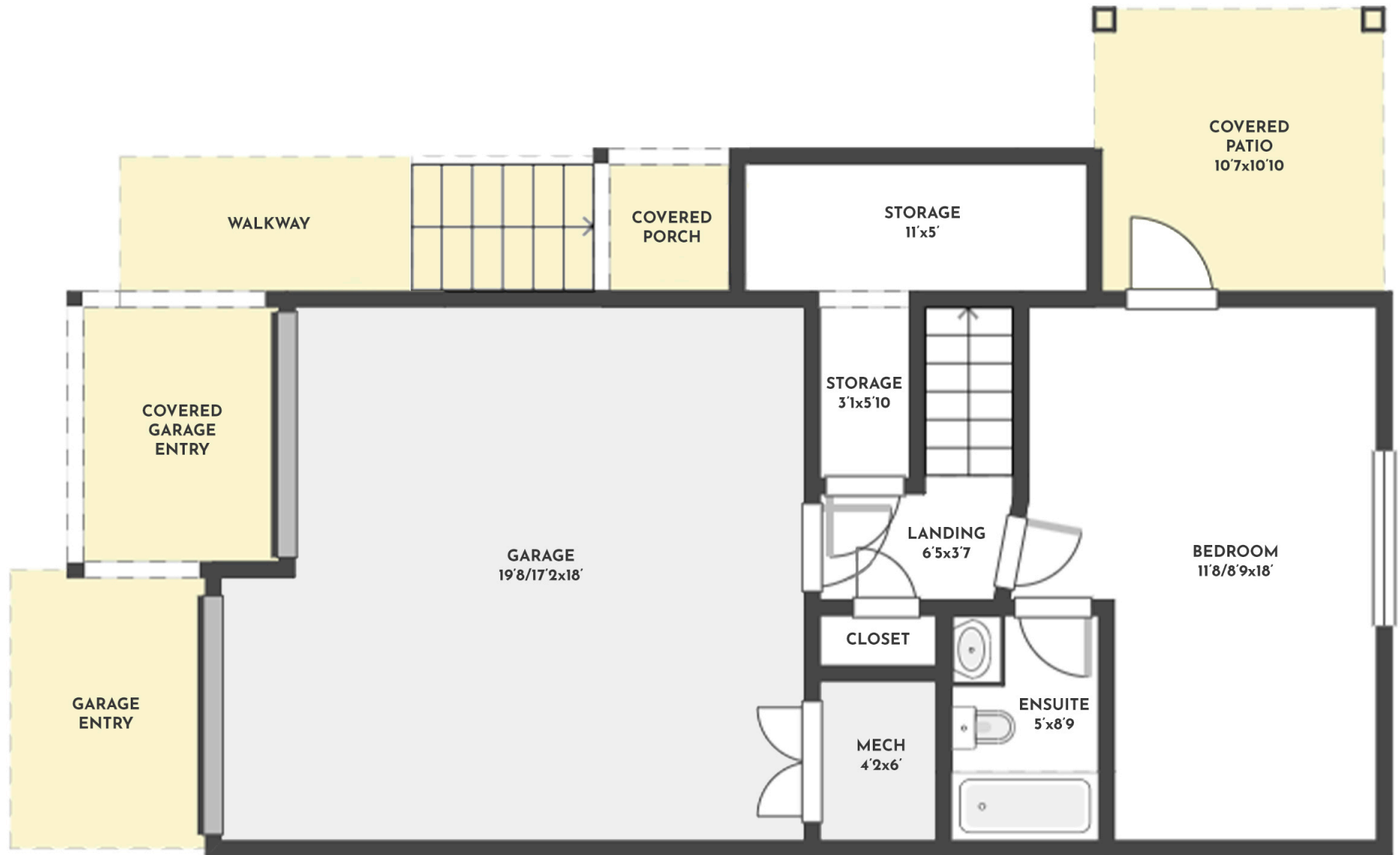


**4 BED | 3.5 BATH | 2117 SQ.FT**  
**GROUND FLOOR | 395 SQ.FT**



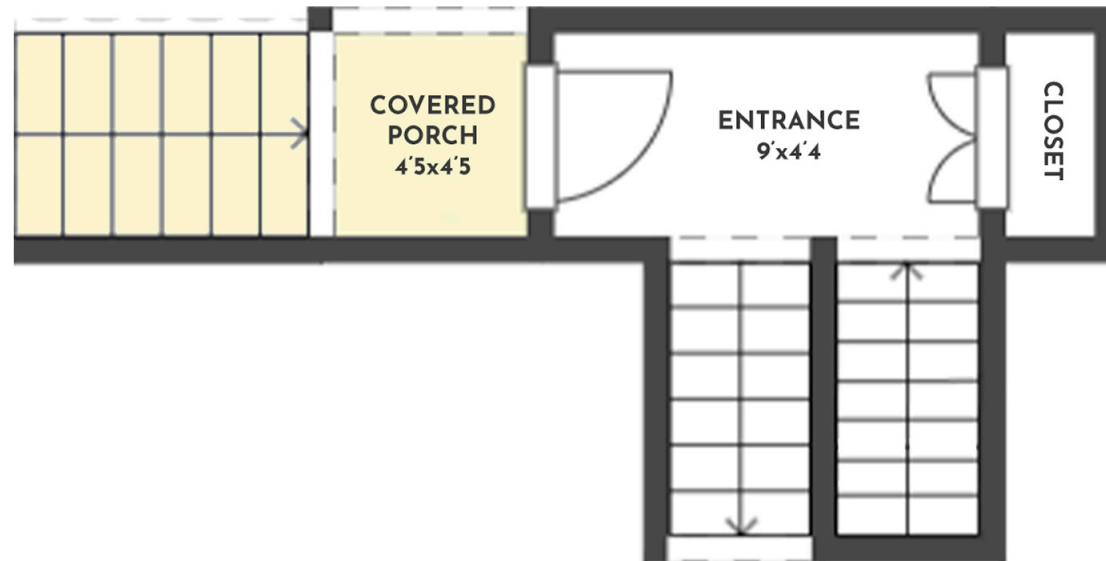
**#44 - 300 DRYSDALE BOULEVARD**

Stone Sisters | [www.StoneSisters.com](http://www.StoneSisters.com) | (250) 862-7675



Tan & grey regions are excluded from the total floor area. All room dimensions and floor areas must be considered approximate and are subject to independent verification. Dimensions are taken from interior laser measurements.

**4 BED | 3.5 BATH | 2117 SQ.FT**  
**FIRST FLOOR | 114 SQ.FT**



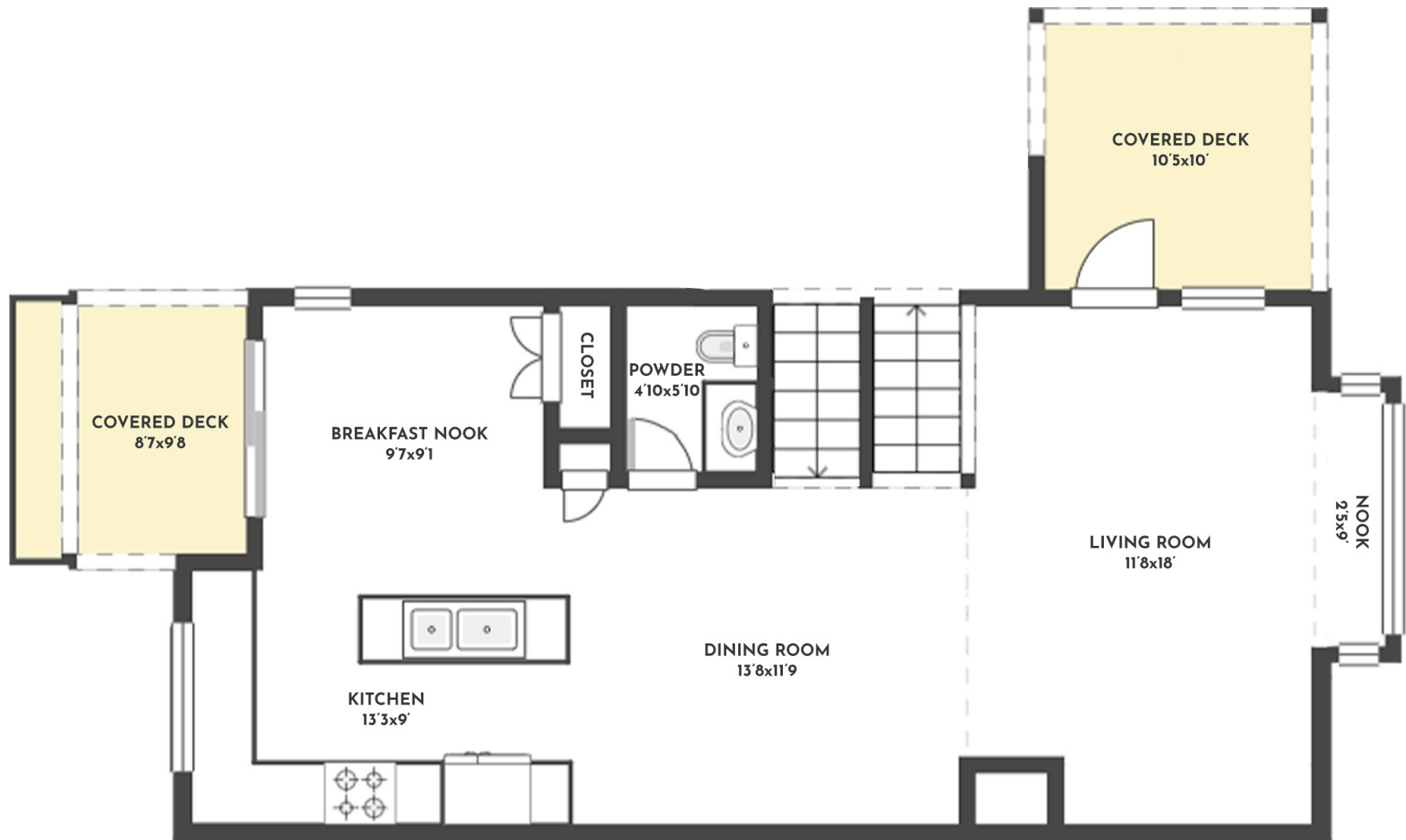
**#44 - 300 DRYSDALE BOULEVARD**

Stone Sisters | [www.StoneSisters.com](http://www.StoneSisters.com) | (250) 862-7675

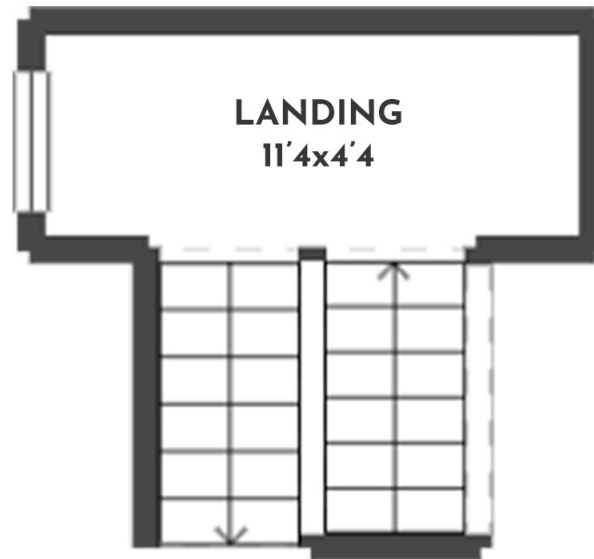


Tan & grey regions are excluded from the total floor area. All room dimensions and floor areas must be considered approximate and are subject to independent verification. Dimensions are taken from interior laser measurements.

**4 BED | 3.5 BATH | 2117 SQ.FT**  
**SECOND FLOOR | 760 SQ.FT**



**4 BED | 3.5 BATH | 2117 SQ.FT**  
**THIRD FLOOR | 114 SQ.FT**



**#44 - 300 DRYSDALE BOULEVARD**

Stone Sisters | [www.StoneSisters.com](http://www.StoneSisters.com) | (250) 862-7675



Tan & grey regions are excluded from the total floor area. All room dimensions and floor areas must be considered approximate and are subject to independent verification. Dimensions are taken from interior laser measurements.

**4 BED | 3.5 BATH | 2117 SQ.FT**  
**FOURTH FLOOR | 782 SQ.FT**

