



5641 Mountainside Drive



3610 square feet total

Taxes : \$5,466.00

Parking: Double attached garage + driveway

Lot Size: 55.7' x 114.8'

Acre: 0.14

Zoning: CD2

5 Bedrooms 4 Bathrooms total

MAIN LEVEL

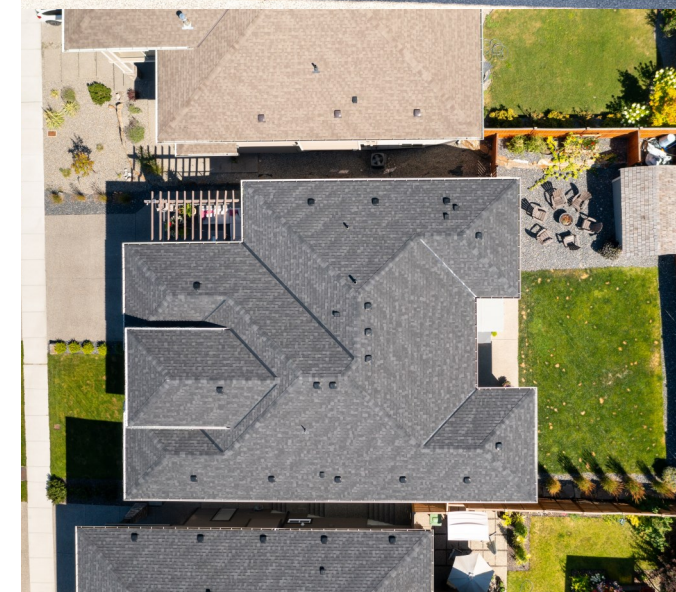
| | |
|-----------------|---------------|
| Primary Bedroom | 14'6 x 12'9 |
| Ensuite-Full | |
| Bathroom- Full | |
| Bedroom | 12'6 x 11'9 |
| Bedroom | 10'7 x 14'2 |
| Kitchen | 13'5 x 19'0 |
| Dining Room | 9'8 x 19'0 |
| Living Room | 15'10 x 11'11 |

LOWER LEVEL

| | |
|----------------|--------------|
| Laundry | 7'0 x 15'8 |
| Bathroom- Full | |
| Bedroom | 12'1 x 12'1 |
| Den / Office | 15'5 x 11'11 |

SUITE

| | |
|---------------|--------------|
| Bathroom-Full | |
| Laundry | 6'5 x 4'3 |
| Kitchen | 10'8 x 12'0 |
| Living Room | 13'6 x 12'0 |
| Bedroom | 10'6 x 15'11 |



The information contained herein is deemed reliable but cannot be guaranteed as to its accuracy. Any information of special interest should be obtained through independent verification.



Property Features

- Brilliantly designed family home in sought-after Kettle Valley boasting tremendous outdoor space with a pool-sized backyard plus a private in-law suite
- Quality finishing and thoughtful detail are apparent throughout the interior with hardwood flooring and a floor plan created for longevity
- The main floor is flooded with natural light featuring an open concept main living space and an expansive deck perfect for enjoying the lake, mountain and city views
- The gourmet kitchen is sure to impress with an oversized island, modern white cabinetry, a wine fridge, gas range and brand new dishwasher
- Walk out the main floor to the hot tub, covered patio & vast green space with multiple areas to enjoy
- The primary bedroom includes a beautiful ensuite complete with a freestanding soaker tub, rain shower and heated flooring
- Ideal for a growing family or accommodating guests the lower level holds two bedroom options (or an office/rec room) , a full bathroom and a laundry room
- The 1 bedroom in-law suite includes an open concept living space and a kitchen finished with quartz plus a generous sized bedroom, personal laundry and a full bathroom



Open Concept Dining Space



Multi-Purpose Den/Office/Bedroom



Primary Suite With Access To The View Deck



Lavish Primary Ensuite

